

# STANDARD DEPARTURE CHART-INSTRUMENT

## ZBAA BEIJING/Capital RNAV (JB)

VAR6° W

BEARINGS ARE MAGNETIC ALTITUDES, ELEVATIONS AND HEIGHTS IN METERS DME DISTANCES IN NAUTICAL MILES DISTANCES IN KM

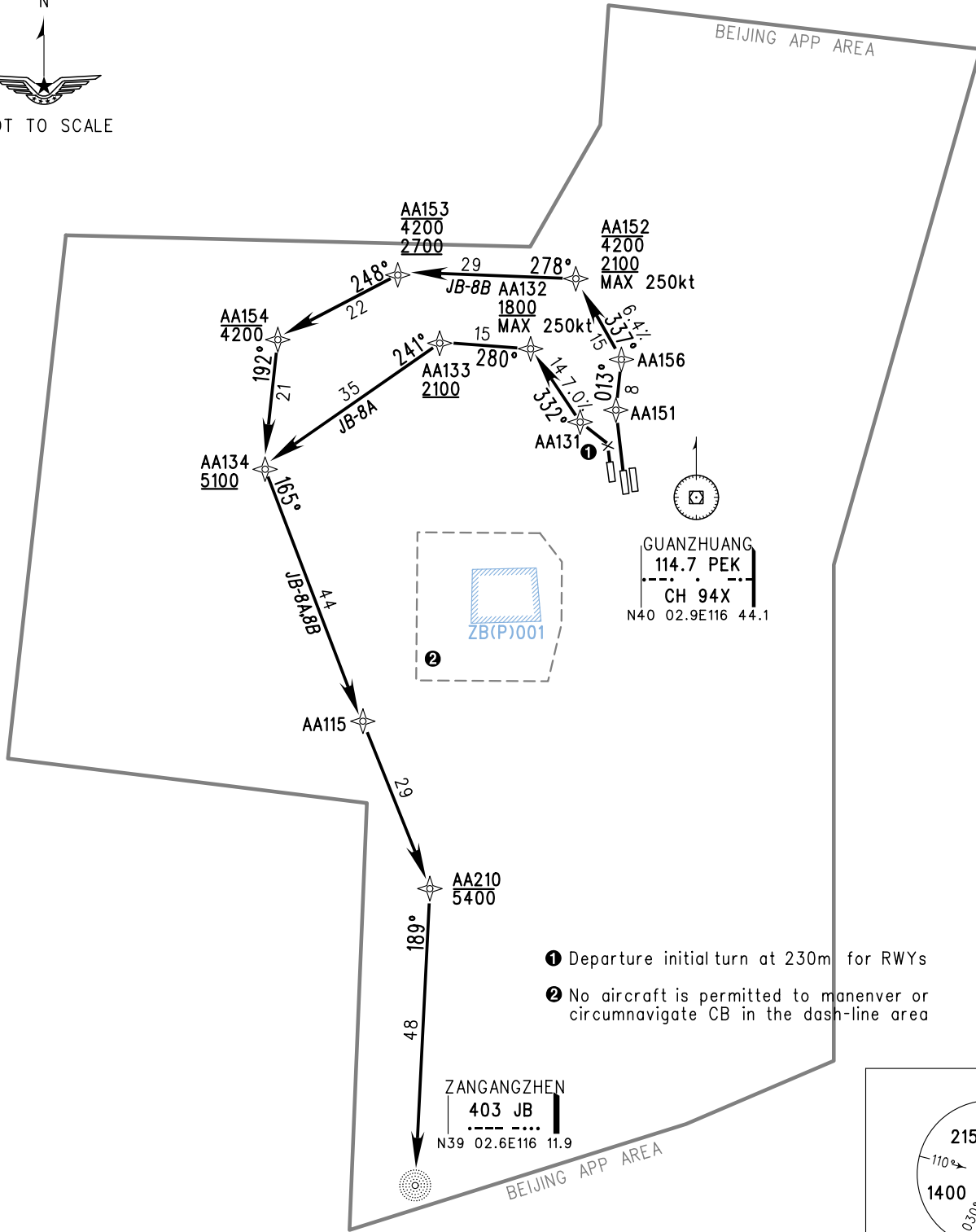
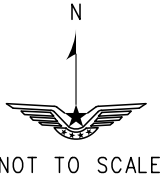
D-ATIS(DEP) 128.65

- 1. RADAR REQUIRED
- 2. RNAV 1
- 3. GNSS, DME/DME/IRU REQUIRED

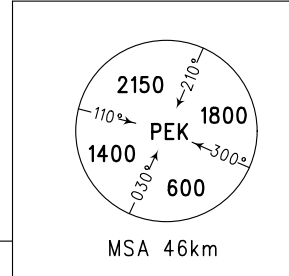
TWR01 124.3(118.3) 18R/36L  
 TWR02 118.5(118.05) 18L/36R  
 TWR03 118.6(118.3) 01/19

APP05 127.75(126.5)  
 APP06 121.1(126.5)  
 APP07 124.4(124.7)

TL 3600  
 TA 3000  
 3300(QNH ≥ 1031hPa)  
 2700(QNH ≤ 979hPa)



- ① Departure initial turn at 230m for RWYs
- ② No aircraft is permitted to maneuver or circumnavigate CB in the dash-line area



Changes: TWR FREQ.