

GENERAL

Operational Hours

ATS Hours / AD OPS Hours / AD ADMIN Hours: H24

Airport Information

RFF: CAT 9
Fuel: Nr. 3 Jet Fuel
PCN: RWY 18R/36L: 79/F/B/W/T
 RWY 18L/36R: 102/R/C/W/T

Operation

Preferential RWY

LDG RWY 18L/36R; and DEP with ATC permission.
 TKOF RWY 18R/36L.

RWY Restriction

180° turns on RWY/TWY prohibited for all ACFT.

TWY Restriction

TWY A (between A3 and A5, between A6 and A7) width 22m / 72ft.
 TWY A (between A5 and A6) width 20m / 66ft.
 TWY T3, T6, T13 width 18m / 59ft.

TWY B4, B5 AVBL for ACFT with wingspan below 52m / 170ft.

Hot Spots

Hot Spot No.	DESCRIPTION
HS 1	ACFT in this area shall observe cautiously, then operate according to ATC CLR and avoid conflict. Hold short in front of TWY B7, when other ACFT is vacating TWY B7.

Standard Taxi Routes

RWY 36R (ARR), 36L (DEP)
 C11, C13, C15 - C - C14 - RWY 36L - B7 or D8/D9 - D - D7 - RWY 36R - C15 (inform ATC when passed by C15).

RWY 18L (ARR), 18R (DEP)
 C9, C7, C5 - C - C4 - RWY 18R - B2 or D1/N - D - D2 - RWY 18L - C5 (inform ATC when passed by C5).

Taxi/Parking

HLDG PSN:

- Stop and wait for ATC instructions at RWY HLDG PSN.
- Report to ATC when the nose of ACFT exceeding holding position.

Taxiing behind ACFT which is holding at short of RWY HLDG PSN is prohibited.

Taxiing on APN guided by follow-me.

Visual docking guidance system at stands 211-216, 221-228 and 231-238.

Marshaller AVBL at stands 1-10, 12, 14, 16-20, 121-128, 201-207, 210, 241-243, 301-310.

Engine Run-up Area

ENG run-ups are subject to GND CLR and may only be carried out at a designated location.

Fast ENG run-ups in the vicinity of boarding bridges or on APN and TWYs are strictly prohibited.

GENERAL**Warnings****SV NDB unusable:**

Between 11-13NM and 20-22NM on bearing 272°.

Beyond 14NM on bearing 067°.

DEP: Between 5-7NM, 9-10NM, 14-19NM on bearing 304°

ARR: Between 15-18NM on bearing 071°

Between 12-13.5NM, 19-20.5NM on bearing 270°

Between 16-17NM, 18-20NM on bearing 339°

HLDG PROC: Between 18-20NM on bearing 339°

Birds in vicinity of AD.

ARRIVAL**Communication**

After vacating RWY, report RWY and TWY designation to TWR CTL.

Arrival Procedure**VFR Traffic Pattern**

RWY 36 right-hand circuit; ALT 400m / 1312ft CAT A/B, 600m / 1970ft CAT C/D.

Visual APCH

Control IAS, is no more than 180KT, when predict flight track mile are 10NM from touch down and IAS is no more than 160KT, when predict flight track mile are 5NM. If flight crew can not conduct, inform ATC.

When ACFT on the base before permission and can not contact APP, they should turn in time and intercept designated RWY final, then ILS APCH and contact TWR.

Minimum Runway Occupancy Time (MROT)

Ensure standard MROT procedures and in addition;

Vacate RWY within 50sec after touching down RWY. If unable to comply, advise ATC at first contact.

Inform GND the position at first contact, when vacate RWY via TWY.

LDG ACFT contact ACFT Operation Control Center on 131.150 to apply handling services.

DEPARTURE

Take-off Minima

RWY		18L/36R, 18R/36L	
All ACFT	ft - m/km	0 - 400R/800V	REDL, HJ only
		0 - 500R/800V	wo LGT, HJ only
		0 - 800R/800V	HN

Communication

When airborne contact assigned APP FREQ immediately.

Departure Procedure

Minimum Runway Occupancy Time (MROT)

Ensure standard MROT procedures and in addition;

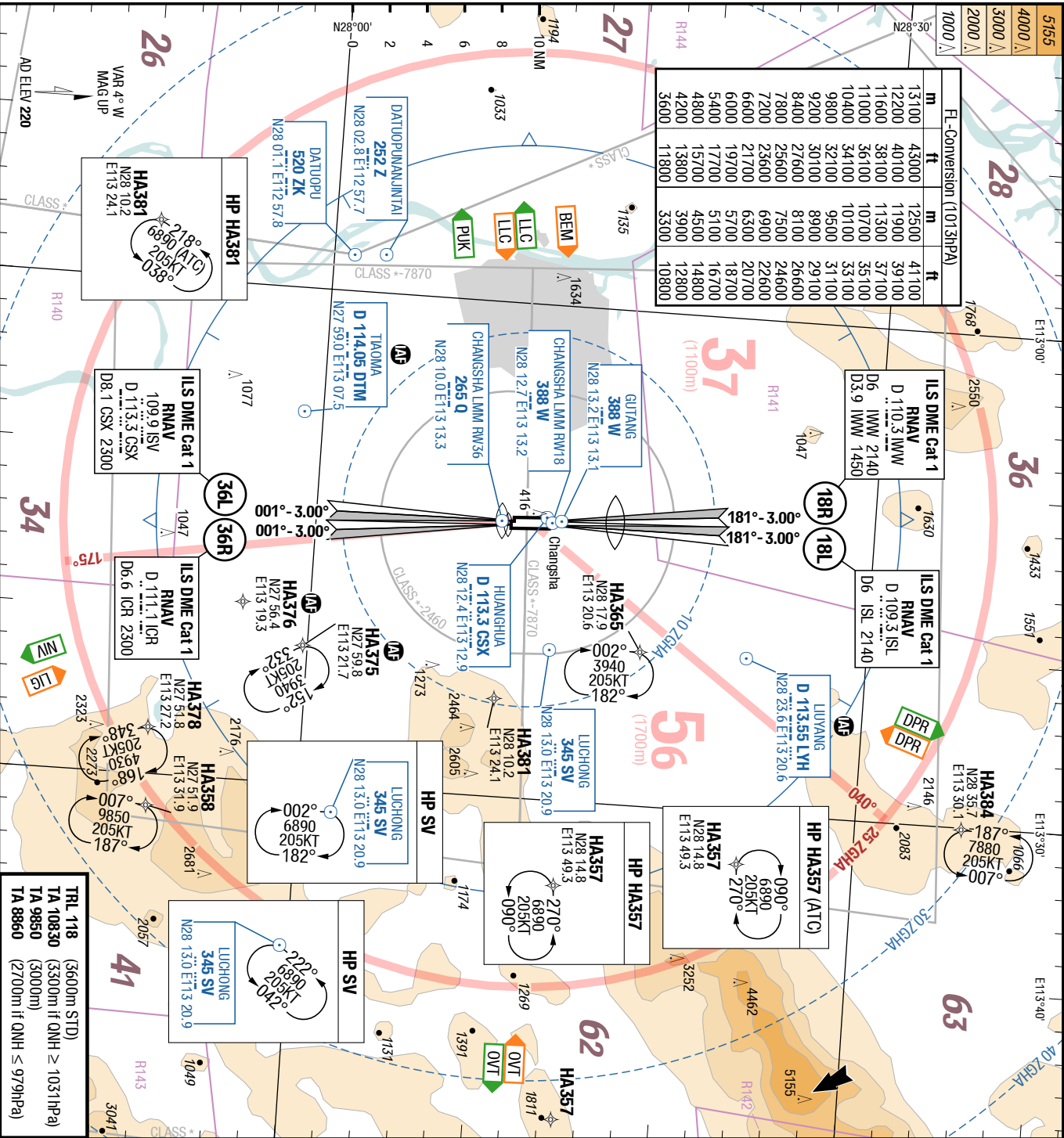
ACFT shall finish RWY alignment within 60sec after receiving ATC instruction of entering RWY.

If unable to comply, inform TWR before reaching RWY HLDG point (except for wet or contaminated RWY).

Noise Abatement Procedure: Use NADP Procedure A.

De-icing

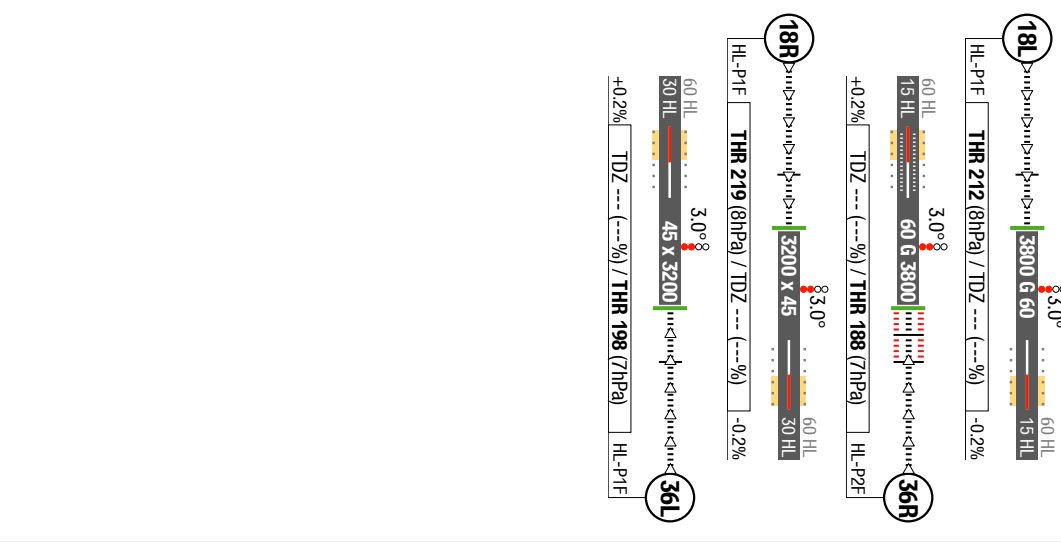
AVBL. De-icing for ACFT shall be carried out at APN or designated location, contact TWR when finished.



ATIS	127.600 ARR	127.075 DEP
APP	119.650 AP01	120.600 AP01
	125.650 AP02	125.050 AP02
	124.600 AP03	125.050 AP03
Huanghua TWR		118.550
		118.025
		118.175
Huanghua GND		121.750 0100-1500
Huanghua D/V		121.950 0100-1300

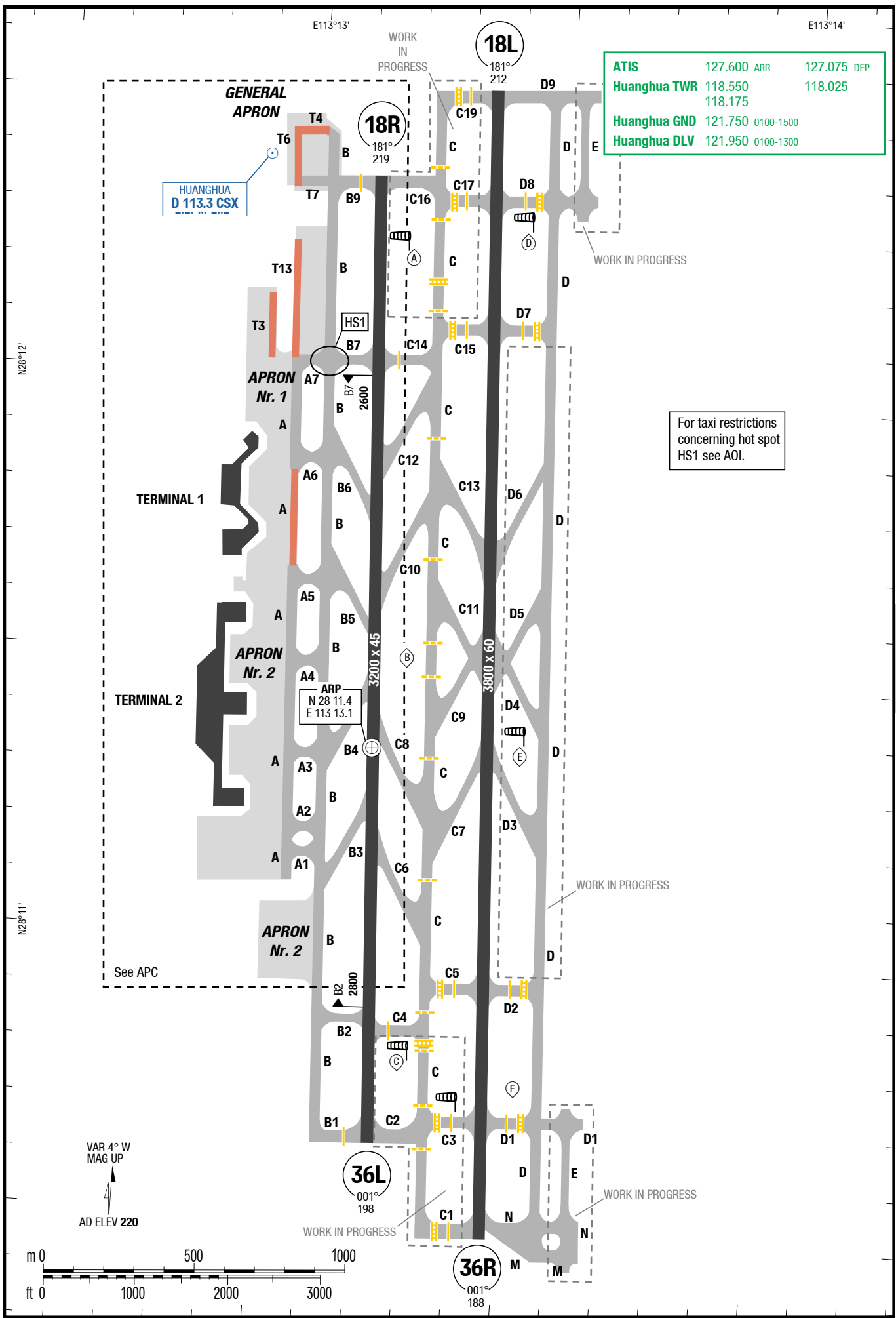
Landing RWY system:

18L	THR 212 (8HPa) / TDZ --- (-0.2%)	3800 G 60	60 HL
18R	THR 219 (8HPa) / TDZ --- (-0.2%)	3200 X 45	60 HL
36R	THR 198 (7HPa)	3600	60 HL
36L	THR 198 (7HPa)	3600	60 HL



ATIS	127.600 ARR	127.075 DEP
Huanghua TWR	118.550	118.025
	118.175	
Huanghua GND	121.750	0100-1500
Huanghua DLV	121.950	0100-1300

For taxi restrictions concerning hot spot HS1 see AOI.

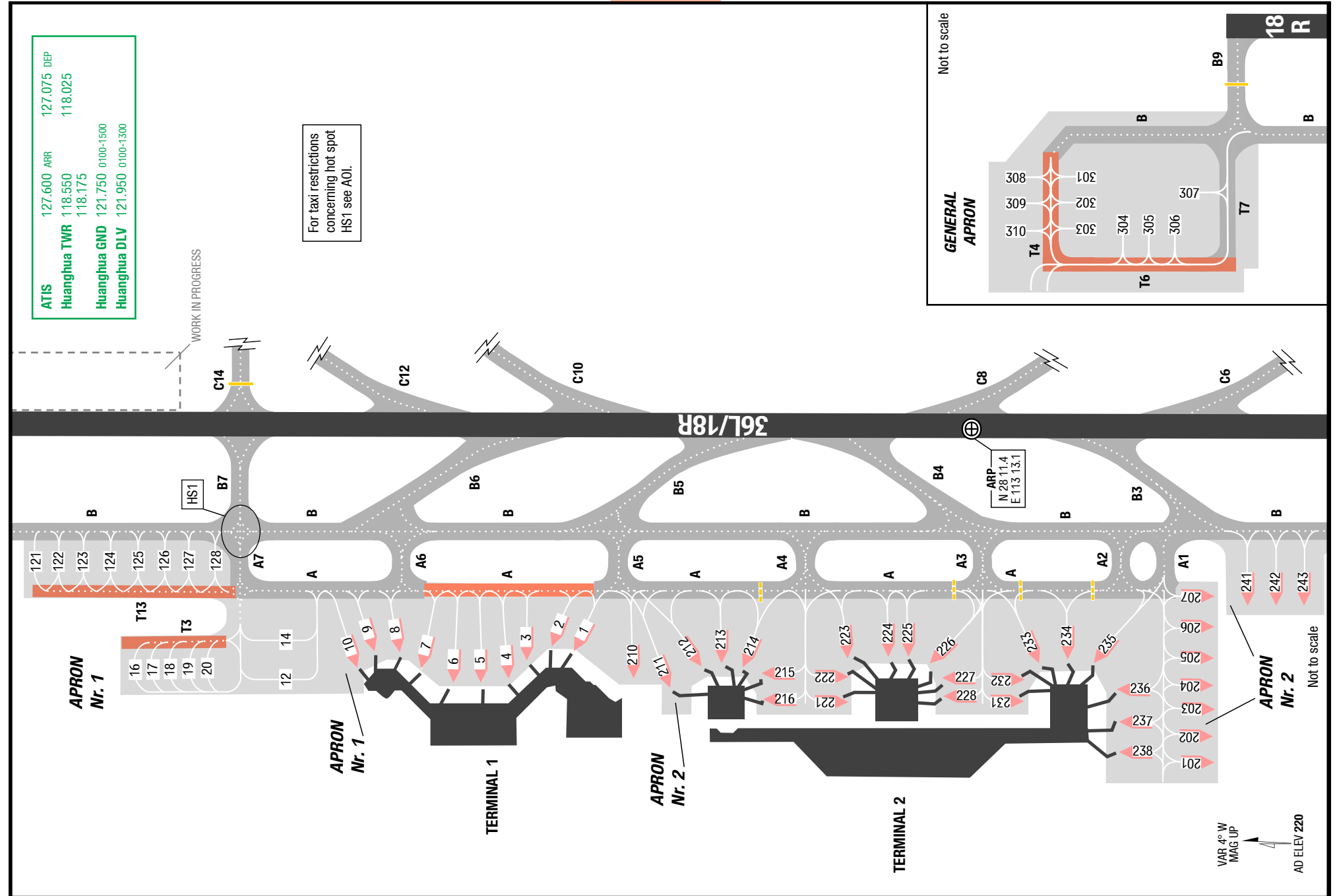


Changes: FREQ, APN, TWY T4, T6, T7, B

N28°11'

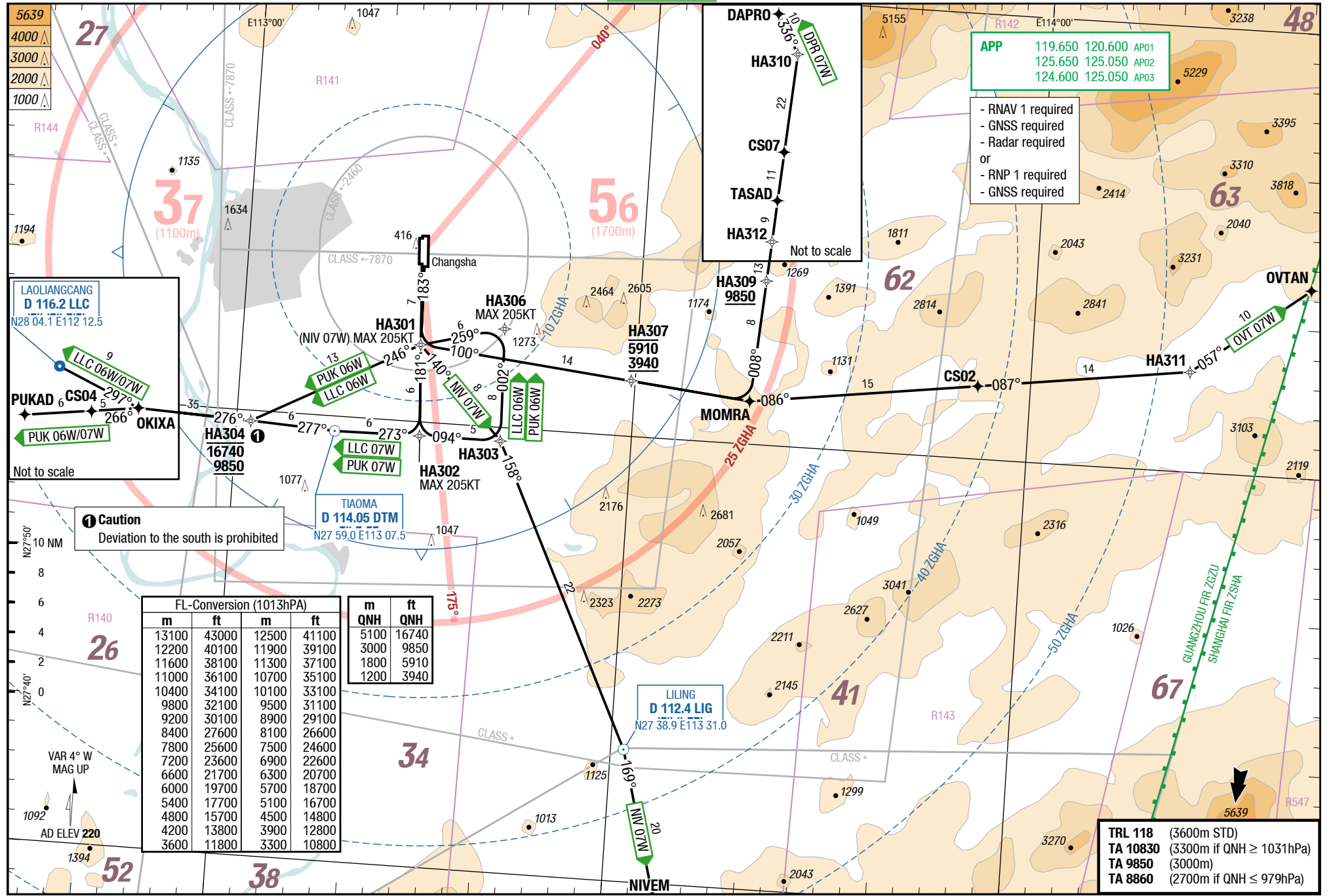
N28°11'

VAR 4° W
MAG UP
AD ELEV 220



4-10

RNAV SIDs RWY 18L



APP
 119.650 120.600 AP01
 125.650 125.050 AP02
 124.600 125.050 AP03

- RNAV 1 required
- GNSS required
- Radar required
- or
- RNP 1 required
- GNSS required

LAOLIANGCANG
D 116.2 LLC
 N28 04.1 E112 12.5

LLC 06W/07W
PUKAD 6 CS04 297°
OKIXA
PUK 06W/07W

Not to scale

Caution
 Deviation to the south is prohibited

FL-Conversion (1013hPa)			
m	ft	m	ft
13100	43000	12500	41100
12200	40100	11900	39100
11600	38100	11300	37100
11000	36100	10700	35100
10400	34100	10100	33100
9800	32100	9500	31100
9200	30100	8900	29100
8400	27600	8100	26600
7800	25600	7500	24600
7200	23600	6900	22600
6600	21700	6300	20700
6000	19700	5700	18700
5400	17700	5100	16700
4800	15700	4500	14800
4200	13800	3900	12800
3600	11800	3300	10800

m	ft
5100	16740
3000	9850
1800	5910
1200	3940

TRL 118 (3600m STD)
TA 10830 (3300m if QNH ≥ 1031hPa)
TA 9850 (3000m)
TA 8860 (2700m if QNH ≤ 979hPa)

CSX-ZGHA

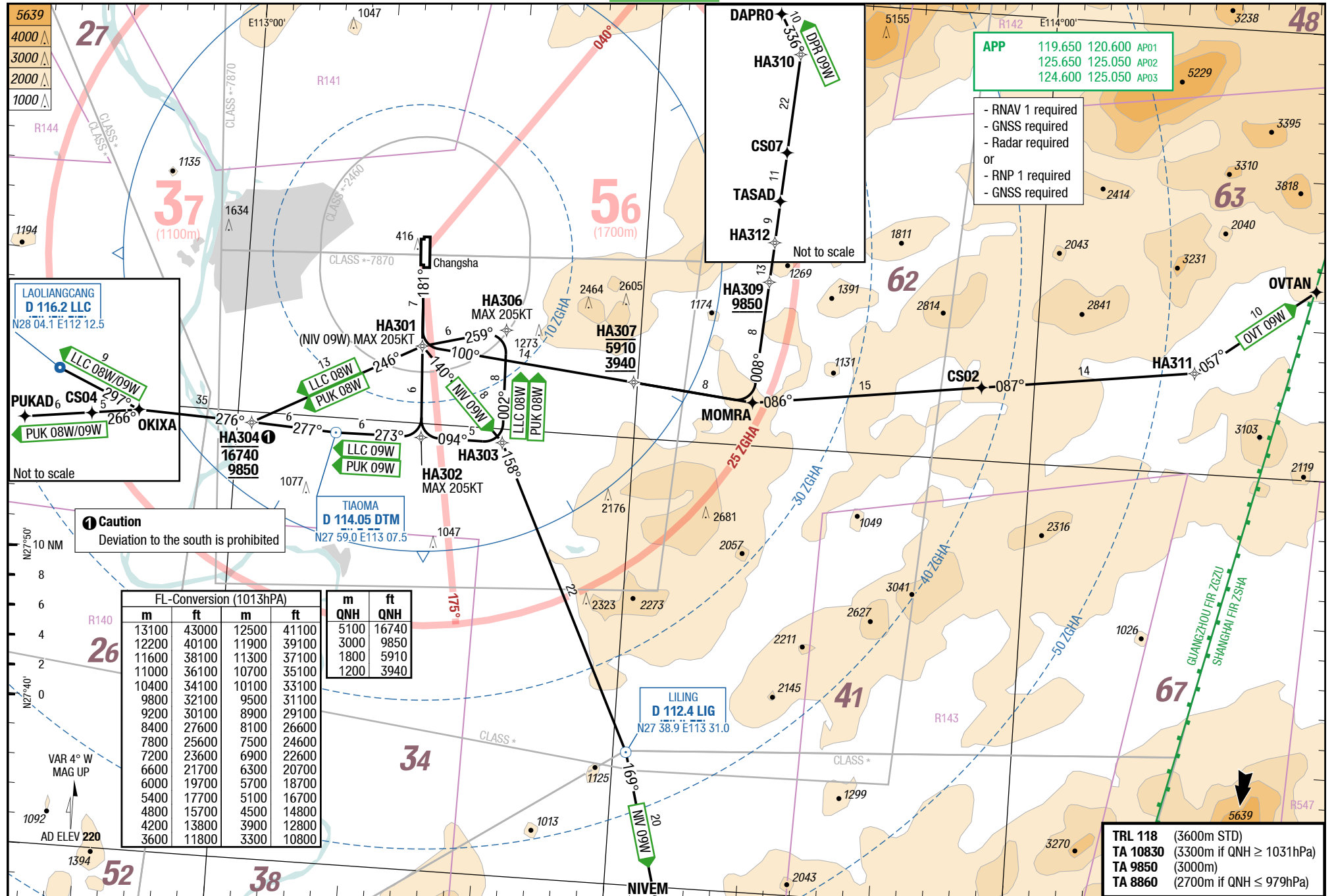
4-20

RNAV SIDs RWY 18R

SID

SID

RNAV SIDs RWY 18R



Caution
Deviation to the south is prohibited

FL-Conversion (1013hPa)				m QNH		ft QNH	
m	ft	m	ft	m	ft	m	ft
13100	43000	12500	41100	5100	16740		
12200	40100	11900	39100	3000	9850		
11600	38100	11300	37100	1800	5910		
11000	36100	10700	35100	1200	3940		
10400	34100	10100	33100				
9800	32100	9500	31100				
9200	30100	8900	29100				
8400	27600	8100	26600				
7800	25600	7500	24600				
7200	23600	6900	22600				
6600	21700	6300	20700				
6000	19700	5700	18700				
5400	17700	5100	16700				
4800	15700	4500	14800				
4200	13800	3900	12800				
3600	11800	3300	10800				

APP
119.650 120.600 AP01
125.650 125.050 AP02
124.600 125.050 AP03

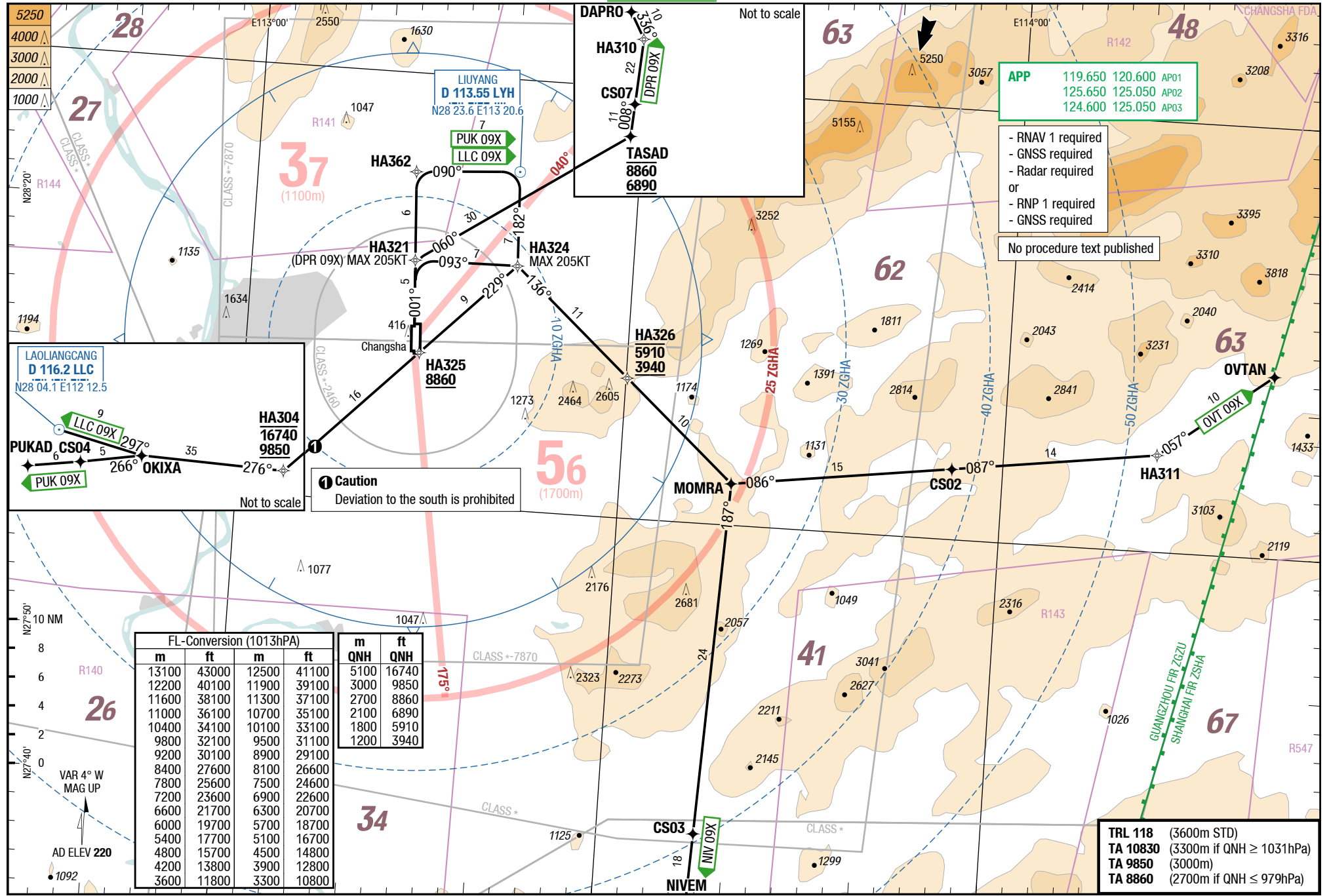
- RNAV 1 required
- GNSS required
- Radar required
- or
- RNP 1 required
- GNSS required

TRL 118 (3600m STD)
TA 10830 (3300m if QNH ≥ 1031hPa)
TA 9850 (3000m)
TA 8860 (2700m if QNH ≤ 979hPa)



4-30

RNAV SIDs RWY 36L



APP 119.650 AP01
125.650 AP02
124.600 AP03

- RNAV 1 required
- GNSS required
- Radar required
- or
- RNP 1 required
- GNSS required

No procedure text published

Caution
Deviation to the south is prohibited

FL-Conversion (1013hPa)				m QNH		ft QNH	
m	ft	m	ft	m	ft	m	ft
13100	43000	12500	41100	5100	16740		
12200	40100	11900	39100	3000	9850		
11600	38100	11300	37100	2700	8860		
11000	36100	10700	35100	2100	6890		
10400	34100	10100	33100	1800	5910		
9800	32100	9500	31100	1200	3940		
9200	30100	8900	29100				
8400	27600	8100	26600				
7800	25600	7500	24600				
7200	23600	6900	22600				
6600	21700	6300	20700				
6000	19700	5700	18700				
5400	17700	5100	16700				
4800	15700	4500	14800				
4200	13800	3900	12800				
3600	11800	3300	10800				

TRL 118 (3600m STD)
 TA 10830 (3300m if QNH ≥ 1031hPa)
 TA 9850 (3000m)
 TA 8860 (2700m if QNH ≤ 979hPa)

Changes: Completely revised

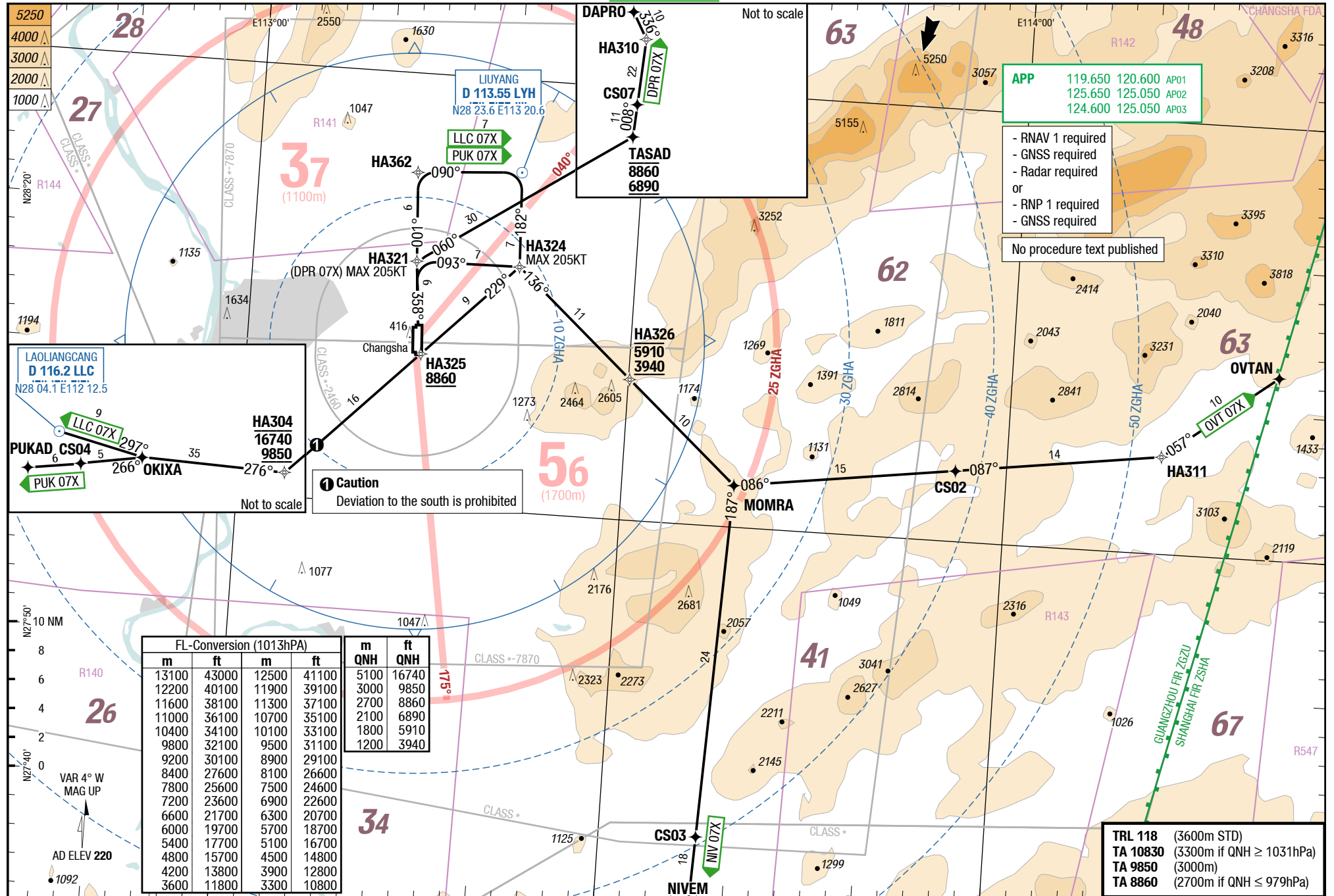
CSX-ZGHA

4-40

RNAV SIDs RWY 36R

SID SID

RNAV SIDs RWY 36R



Changes: new

Effective 30-MAR-2017

23-MAR-2017

CSX-ZGHA

China Changsha Huanghua

SIDs RWY 18R

SIDs RWY 18L

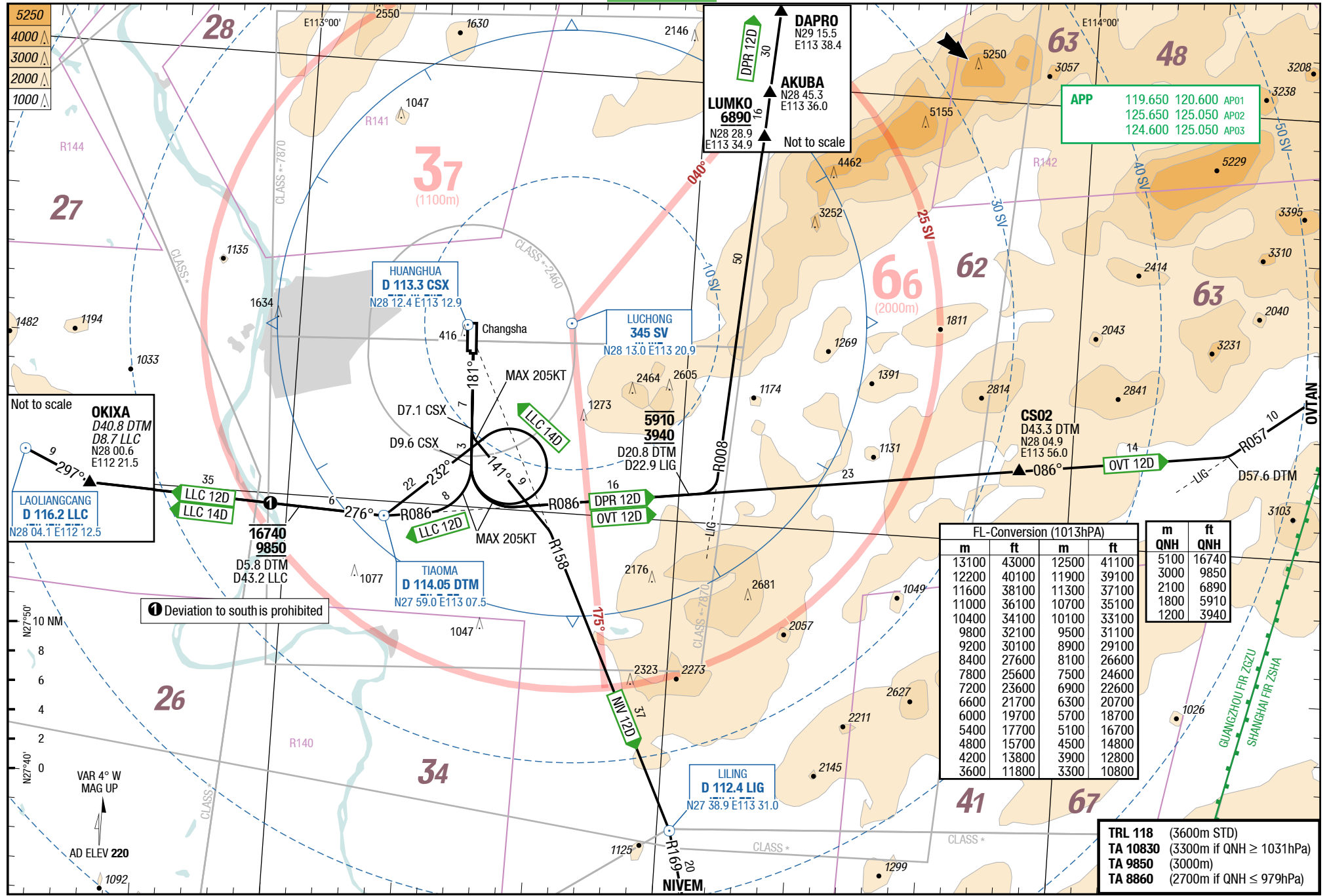
SID

SID

Huanghua Changsha China

SIDs RWY 18R

SIDs RWY 18L



APP

119.650	120.600	AP01
125.650	125.050	AP02
124.600	125.050	AP03

FL-Conversion (1013hPa)

m	ft	m	ft	m	ft
13100	43000	12500	41100	5100	16740
12200	40100	11900	39100	3000	9850
11600	38100	11300	37100	2100	6890
11000	36100	10700	35100	1800	5910
10400	34100	10100	33100	1200	3940
9800	32100	9500	31100		
9200	30100	8900	29100		
8400	27600	8100	26600		
7800	25600	7500	24600		
7200	23600	6900	22600		
6600	21700	6300	20700		
6000	19700	5700	18700		
5400	17700	5100	16700		
4800	15700	4500	14800		
4200	13800	3900	12800		
3600	11800	3300	10800		

TRL 118	(3600m STD)
TA 10830	(3300m if QNH ≥ 1031hPa)
TA 9850	(3000m)
TA 8860	(2700m if QNH ≤ 979hPa)

Changes: new

LSY Standard (unitopww)

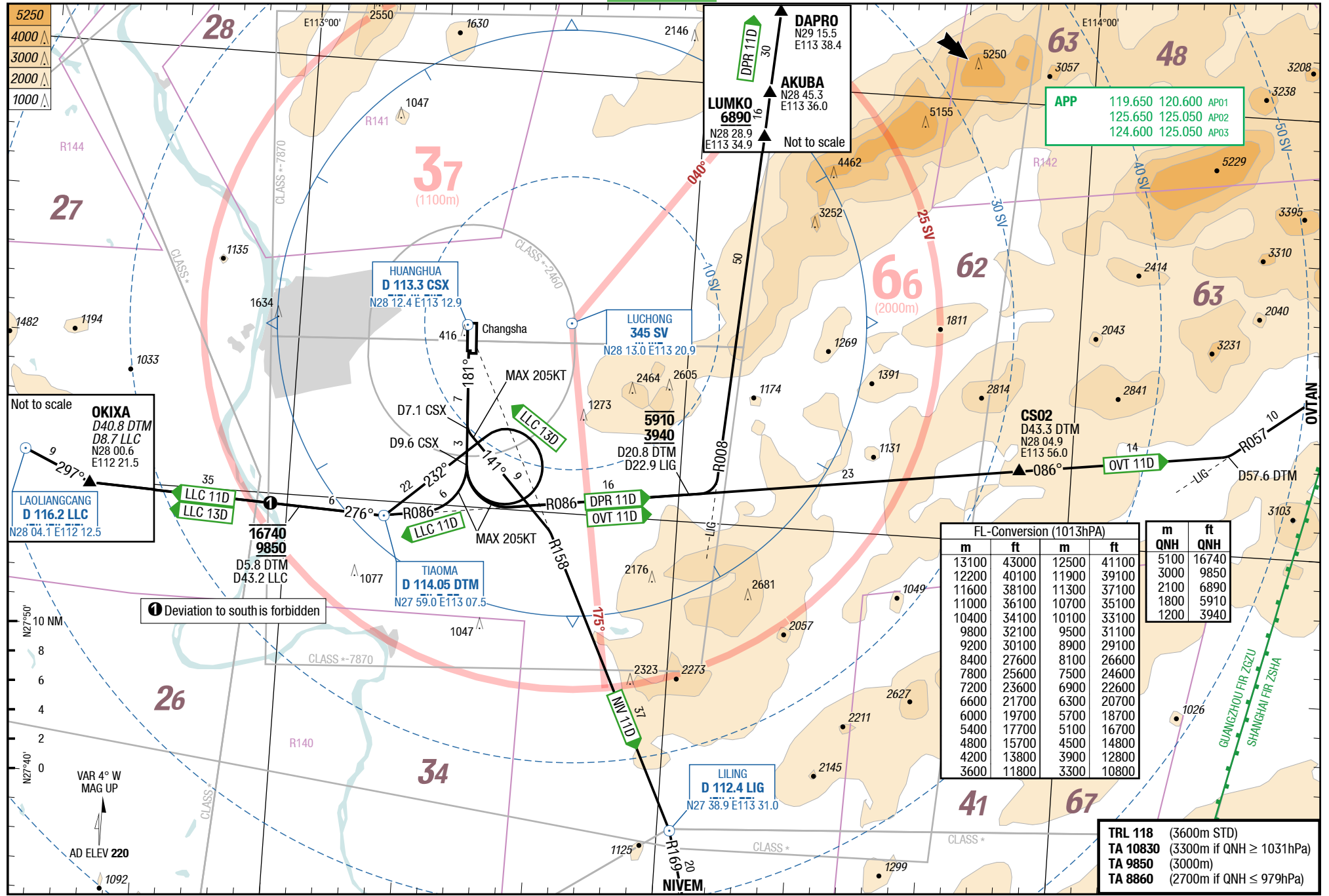
© Lido 2017

4-60

SIDs RWY 18R

SID SID

SIDs RWY 18R



APP

119.650	120.600	AP01
125.650	125.050	AP02
124.600	125.050	AP03

FL-Conversion (1013hPa)

m	ft	m	ft
13100	43000	12500	41100
12200	40100	11900	39100
11600	38100	11300	37100
11000	36100	10700	35100
10400	34100	10100	33100
9800	32100	9500	31100
9200	30100	8900	29100
8400	27600	8100	26600
7800	25600	7500	24600
7200	23600	6900	22600
6600	21700	6300	20700
6000	19700	5700	18700
5400	17700	5100	16700
4800	15700	4500	14800
4200	13800	3900	12800
3600	11800	3300	10800

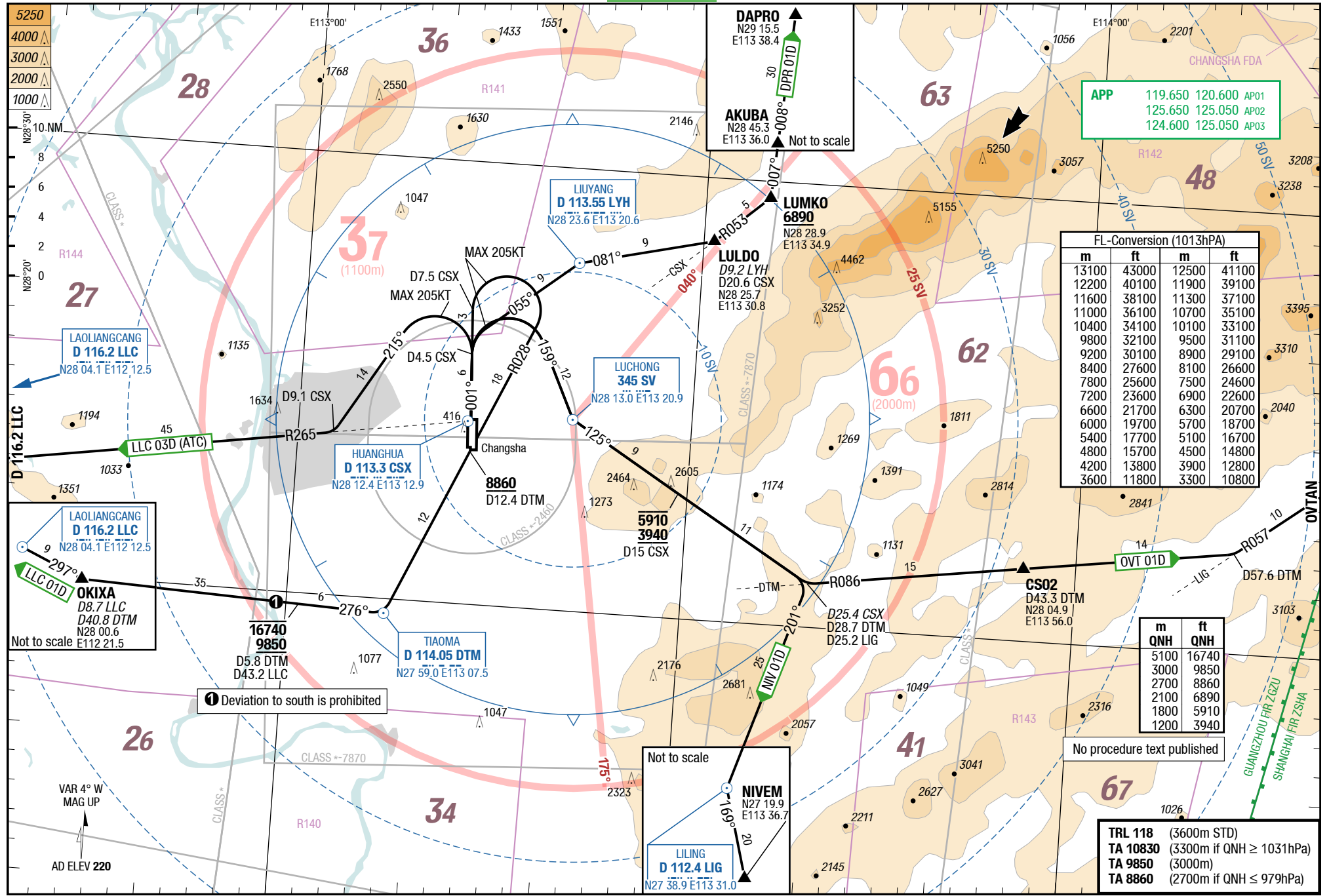
m	ft
5100	16740
3000	9850
2100	6890
1800	5910
1200	3940

TRL 118	(3600m STD)
TA 10830	(3300m if QNH ≥ 1031hPa)
TA 9850	(3000m)
TA 8860	(2700m if QNH ≤ 979hPa)

Changes: new

4-70

SIDs RWY 36L



APP 119.650 120.600 AP01
 125.650 125.050 AP02
 124.600 125.050 AP03

FL-Conversion (1013hPa)			
m	ft	m	ft
13100	43000	12500	41100
12200	40100	11900	39100
11600	38100	11300	37100
11000	36100	10700	35100
10400	34100	10100	33100
9800	32100	9500	31100
9200	30100	8900	29100
8400	27600	8100	26600
7800	25600	7500	24600
7200	23600	6900	22600
6600	21700	6300	20700
6000	19700	5700	18700
5400	17700	5100	16700
4800	15700	4500	14800
4200	13800	3900	12800
3600	11800	3300	10800

m	ft	m	ft
5100	16740	3000	9850
2700	8860	2100	6890
1800	5910	1200	3940

TRL 118 (3600m STD)
 TA 10830 (3300m if QNH ≥ 1031hPa)
 TA 9850 (3000m)
 TA 8860 (2700m if QNH ≤ 979hPa)

Changes: new

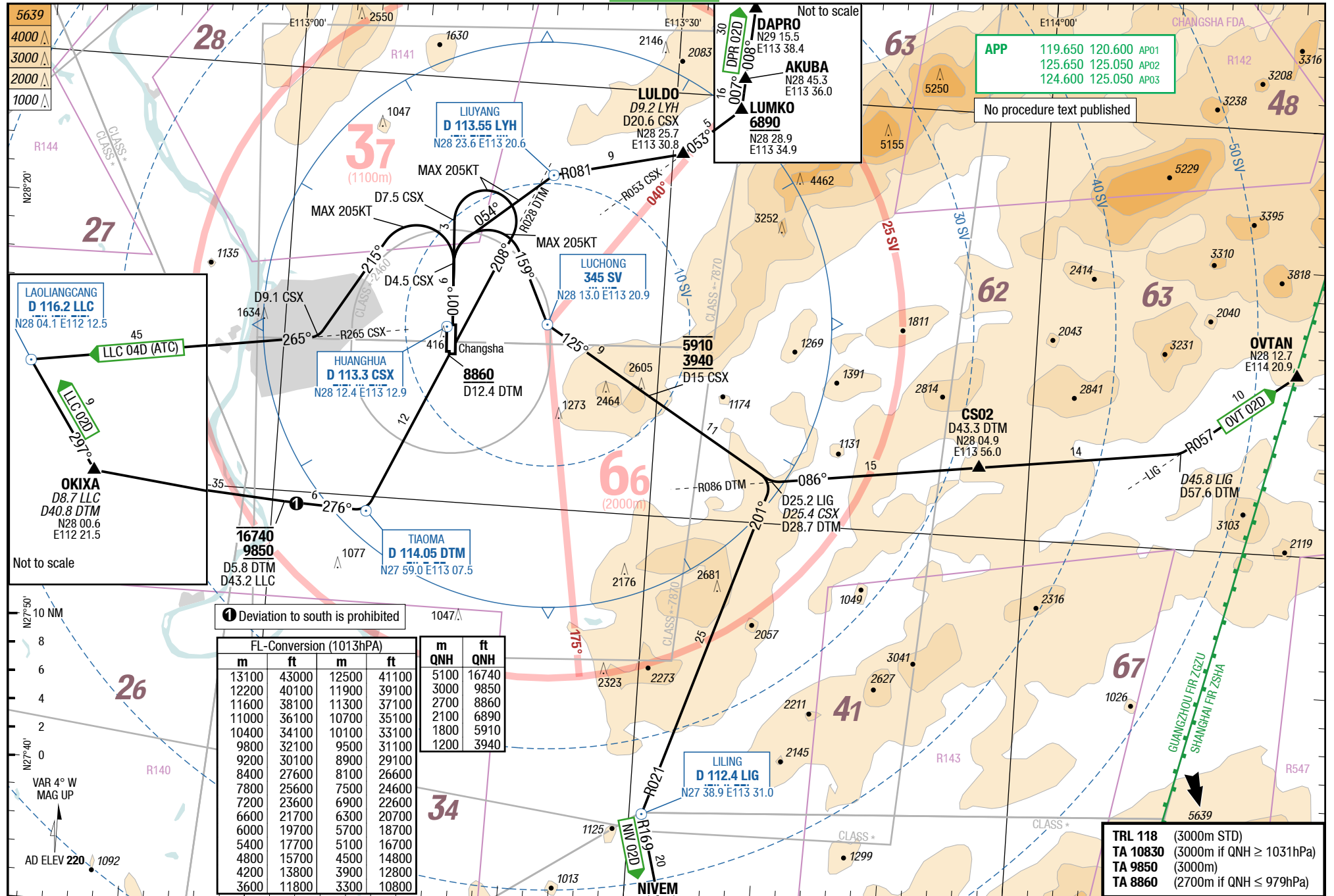
4-80

SIDs RWY 36R

SID

SID

SIDs RWY 36R



① Deviation to south is prohibited

FL-Conversion (1013hPa)			
m	ft	m	ft
13100	43000	12500	41100
12200	40100	11900	39100
11600	38100	11300	37100
11000	36100	10700	35100
10400	34100	10100	33100
9800	32100	9500	31100
9200	30100	8900	29100
8400	27600	8100	26600
7800	25600	7500	24600
7200	23600	6900	22600
6600	21700	6300	20700
6000	19700	5700	18700
5400	17700	5100	16700
4800	15700	4500	14800
4200	13800	3900	12800
3600	11800	3300	10800

TRL 118	(3000m STD)
TA 10830	(3000m if QNH ≥ 1031hPa)
TA 9850	(3000m)
TA 8860	(2700m if QNH ≤ 979hPa)

CSX-ZGHA

5-10

RNAV SIDs RWY 18L

DPR 07W / LAOLIANGCANG 06W / LAOLIANGCANG 07W / NIV 07W / OVT 07W / PUK 06W / PUK 07W

RWY 18L (181°)

	GS	120	150	180	210	240	270
7.5%	ft/MIN	1000	1200	1400	1600	1900	2100

DESIGNATOR	ROUTING	ALTITUDES
	Runway 18L	
DPR 07W 119.650	No procedure text published	HA307 between 3940 and 5910 HA309 MNM 9850
LAOLIANGCANG 06W LLC 06W 119.650	No procedure text published	HA304 between 9850 and 16740
LAOLIANGCANG 07W LLC 07W 7.5% to HA304 119.650	No procedure text published	HA304 between 9850 and 16740
NIV 07W 119.650	No procedure text published	
OVT 07W 119.650	No procedure text published	HA307 between 3940 and 5910
PUK 06W 119.650	No procedure text published	HA304 between 9850 and 16740
PUK 07W 7.5% to HA304 119.650	No procedure text published	HA304 between 9850 and 16740

DPR 09W / LAOLIANGCANG 08W / LAOLIANGCANG 09W / NIV 09W / OVT 09W / PUK 08W / PUK 09W

RWY 18R (181°)

	GS	120	150	180	210	240	270
7.5%	ft/MIN	1000	1200	1400	1600	1900	2100

DESIGNATOR	ROUTING	ALTITUDES
	Runway 18R	
DPR 09W 119.650	No procedure text published	HA307 between 3940 and 5910 HA309 MNM 9850
LAOLIANGCANG 08W LLC 08W 119.650	No procedure text published	HA304 between 9850 and 16740
LAOLIANGCANG 09W LLC 09W 7.5% to HA304 119.650	No procedure text published	HA304 between 9850 and 16740
NIV 09W 119.650	No procedure text published	
OVT 09W 119.650	No procedure text published	HA307 between 3940 and 5910
PUK 08W 119.650	No procedure text published	HA304 between 9850 and 16740
PUK 09W 7.5% to HA304 119.650	No procedure text published	HA304 between 9850 and 16740

DPR 12D / LAOLIANGCANG 12D / LAOLIANGCANG 14D / NIV 12D / OVT 12D
RWY 18L (181°)

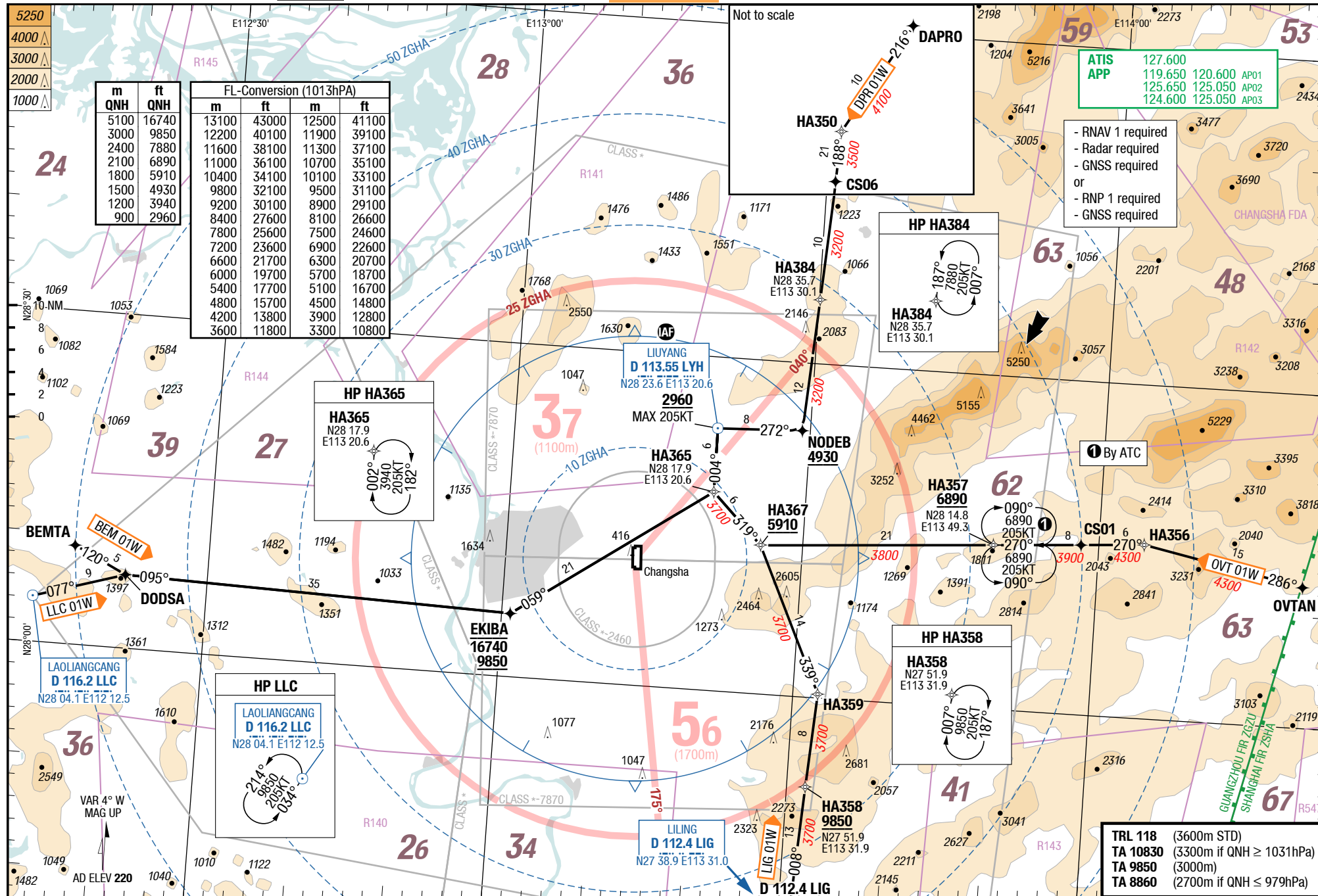
	GS	120	150	180	210	240	270
7.5%	ft/MIN	1000	1200	1400	1600	1900	2100

DESIGNATOR	ROUTING	ALTITUDES
	Runway 18L	
DPR 12D 119.650	No procedure text published	D20.8 DTM /D22.9 LIG between 3940 and 5910 LUMKO MNM 6890
LAOLIANGCANG 12D LLC 12D 7.5% to D5.8 DTM 119.650	No procedure text published	D5.8 DTM /D43.2 LLC between 9850 and 16740
LAOLIANGCANG 14D LLC 14D 119.650	No procedure text published	D5.8 DTM /D43.2 LLC between 9850 and 16740
NIV 12D 119.650	No procedure text published	
OVT 12D 119.650	No procedure text published	D20.8 DTM /D22.9 LIG between 3940 and 5910

DPR 11D / LAOLIANGCANG 11D / LAOLIANGCANG 13D / NIV 11D / OVT 11D
RWY 18R (181°)

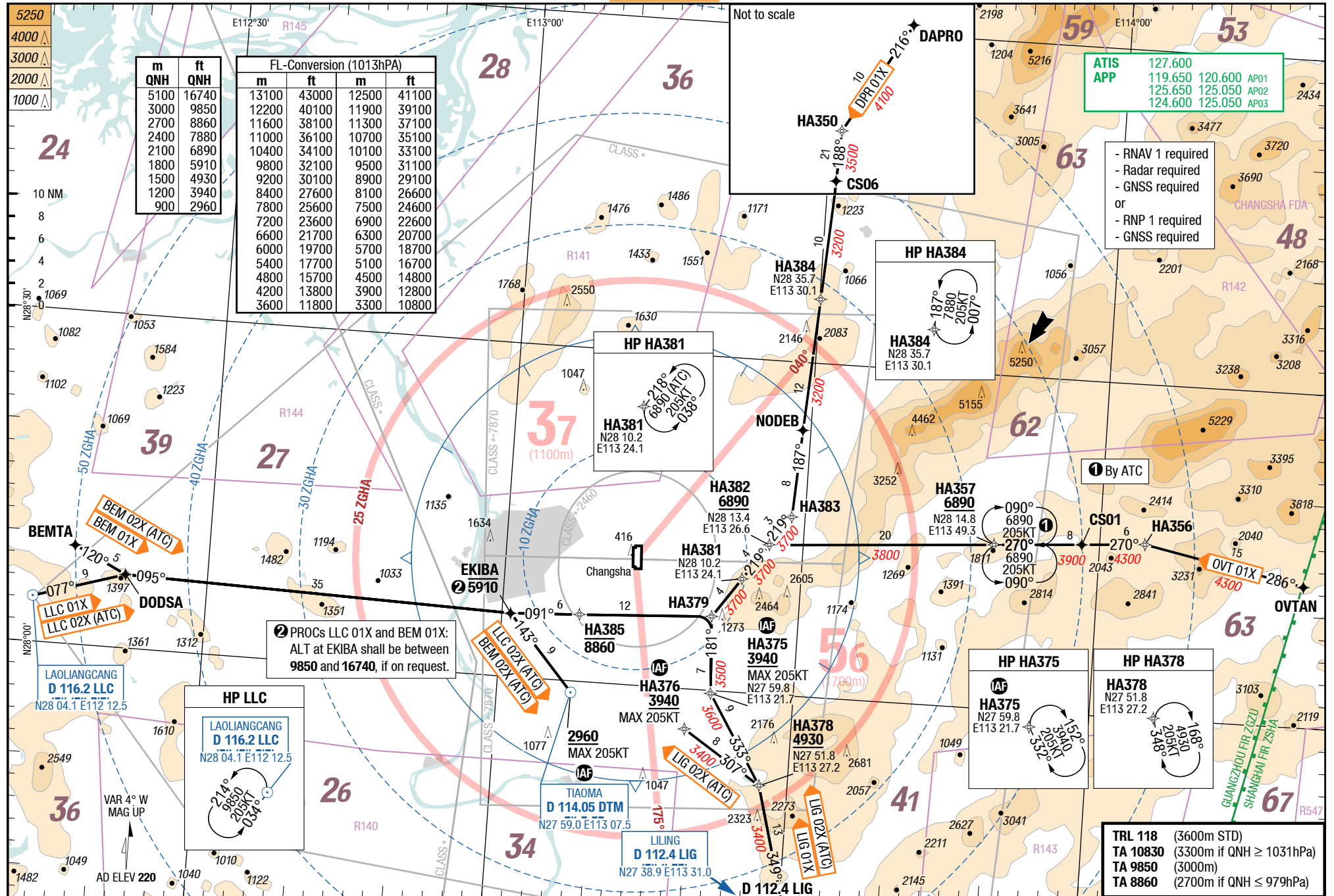
	GS	120	150	180	210	240	270
7.5%	ft/MIN	1000	1200	1400	1600	1900	2100

DESIGNATOR	ROUTING	ALTITUDES
	Runway 18R	
DPR 11D 119.650	No procedure text published	D20.8 DTM /D22.9 LIG between 3940 and 5910 LUMKO MNM 6890
LAOLIANGCANG 11D LLC 11D 7.5% to D5.8 DTM 119.650	No procedure text published	D5.8 DTM /D43.2 LLC between 9850 and 16740
LAOLIANGCANG 13D LLC 13D 119.650	No procedure text published	D5.8 DTM /D43.2 LLC between 9850 and 16740
NIV 11D 119.650	No procedure text published	
OVT 11D 119.650	No procedure text published	D20.8 DTM /D22.9 LIG between 3940 and 5910



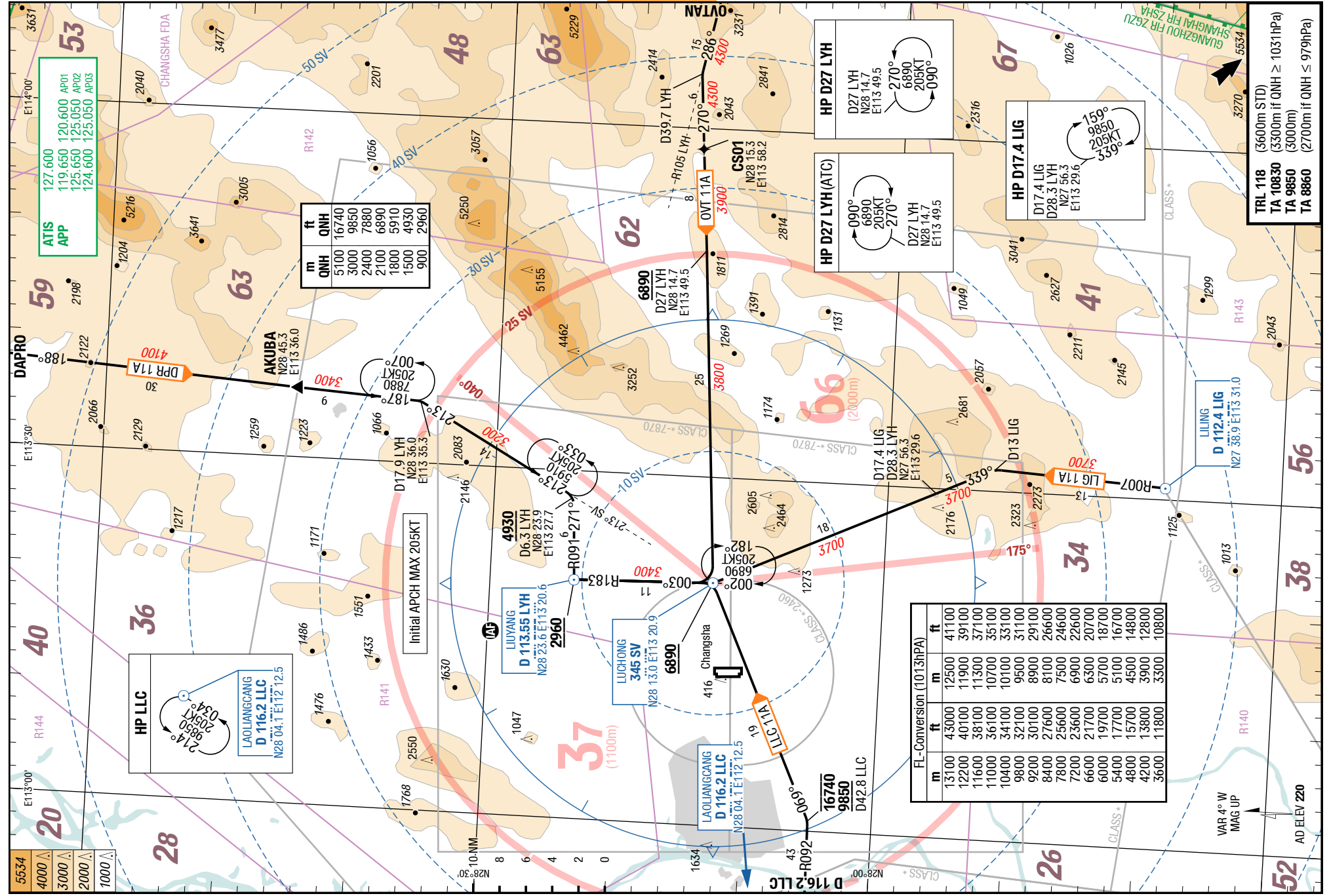
Changes: New

TRL 118	(3600m STD)
TA 10830	(3300m if QNH ≥ 1031hPa)
TA 9850	(3000m)
TA 8860	(2700m if QNH ≤ 979hPa)

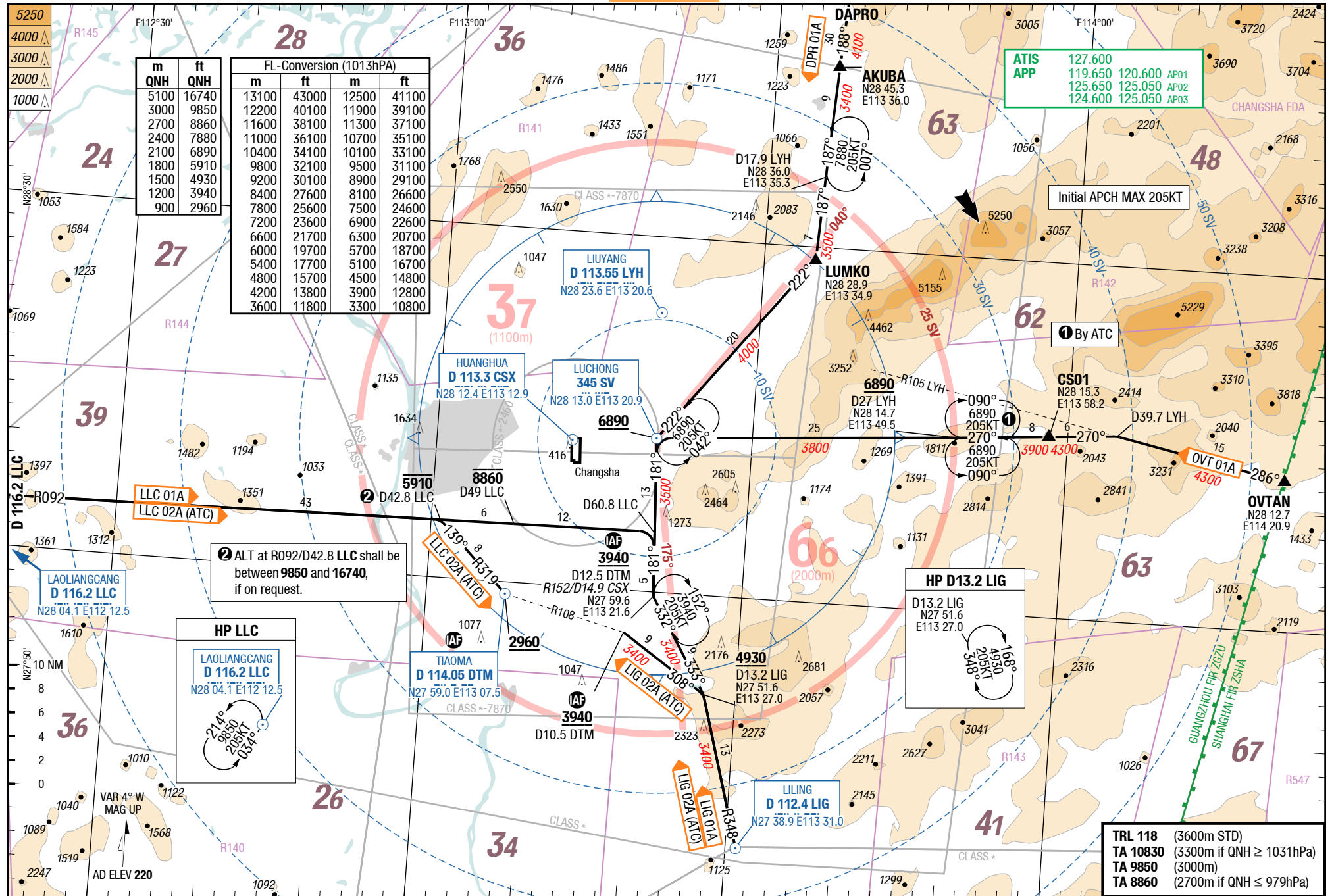


6-30

STARs RWYs 18L/R



Changes: Completely revised

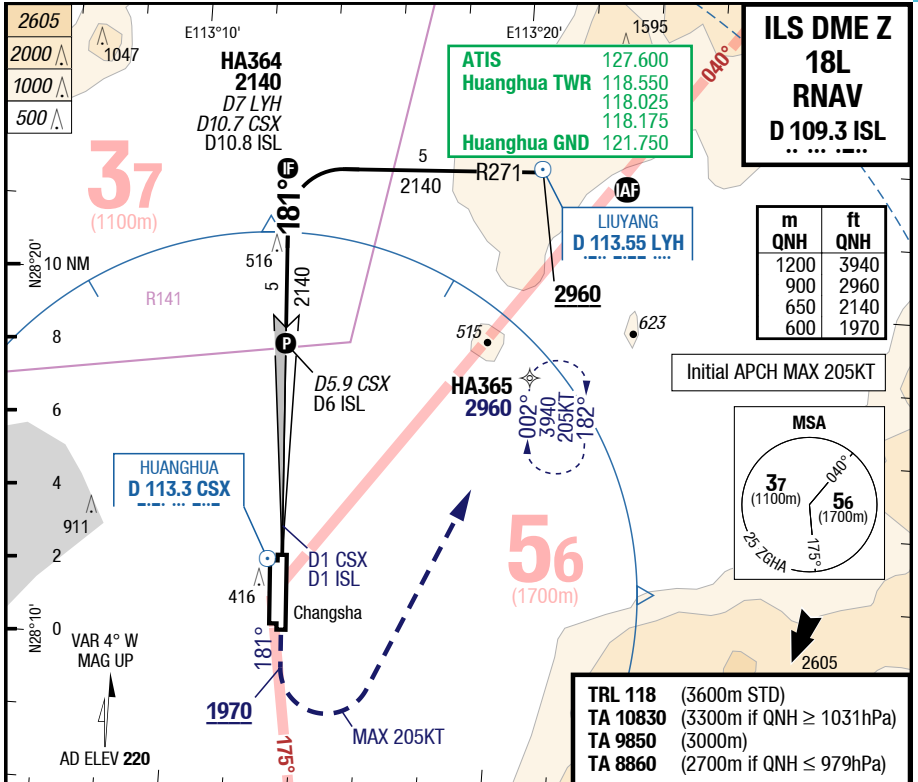


15-JUN-2017

CSX-ZGHA

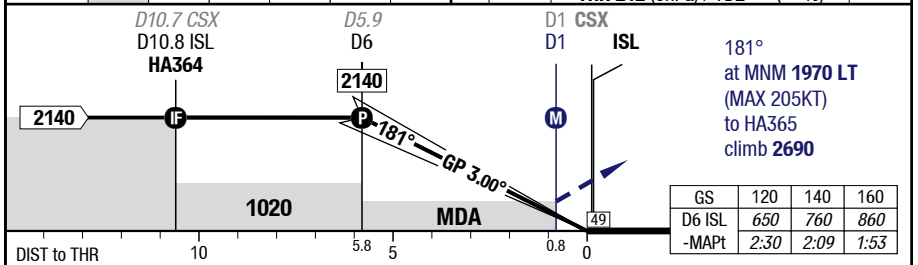
7-10

ILS DME Z 18L RNAV



LOC 3.05°									
D ISL	6	5	4	3	2				
	2140	1830	1510	1180	860				

HL-P1F THR 212 (8hPa) / TDZ --- (---%) -0.2%



18L		Cat 1	LOC DME	Circling	
C	ft - m/km ft	200 - 550R/800V 420	510 - 2.1V 730	740 - 3.2V 960	
D	ft - m/km ft	200 - 550R/800V 420	510 - 2.1V 730	1100 - 5.0V 1320	

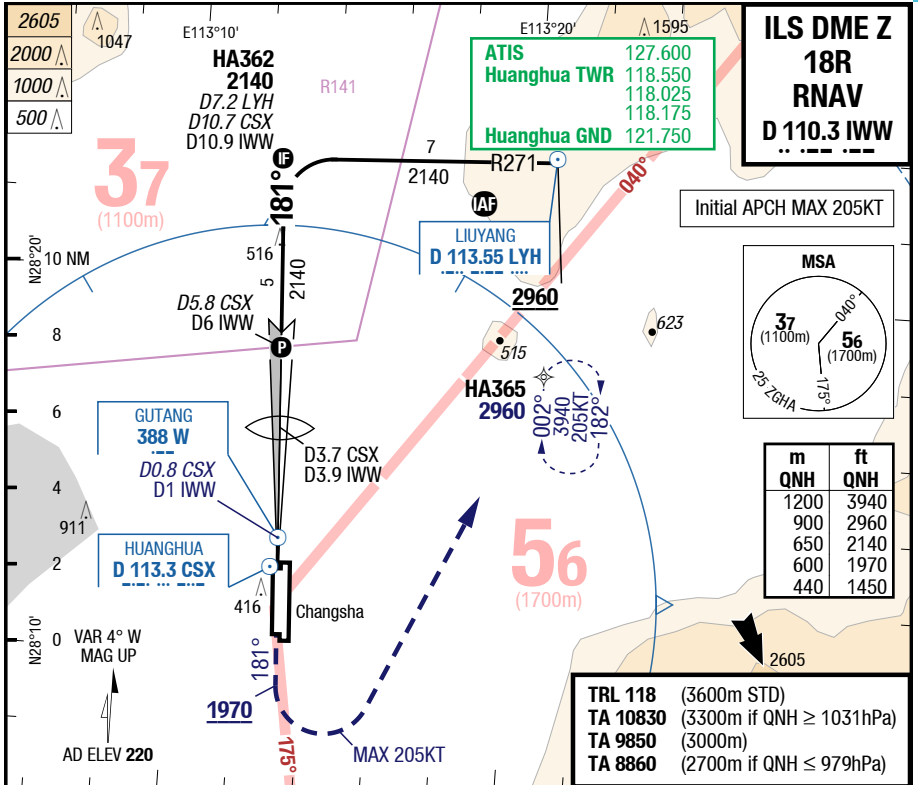
Changes: FREQ

15-JUN-2017

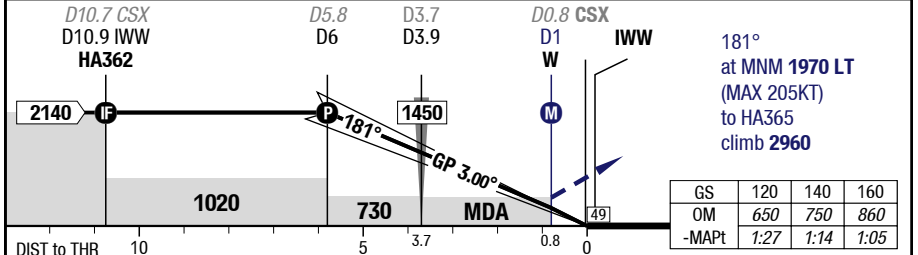
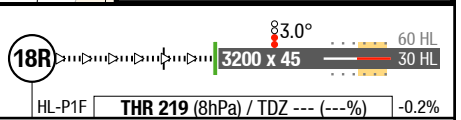
CSX-ZGHA

7-20

ILS DME Z 18R RNAV



LOC 3.04°				
D IWW	6	5	3	2
	2140	1830	1180	860



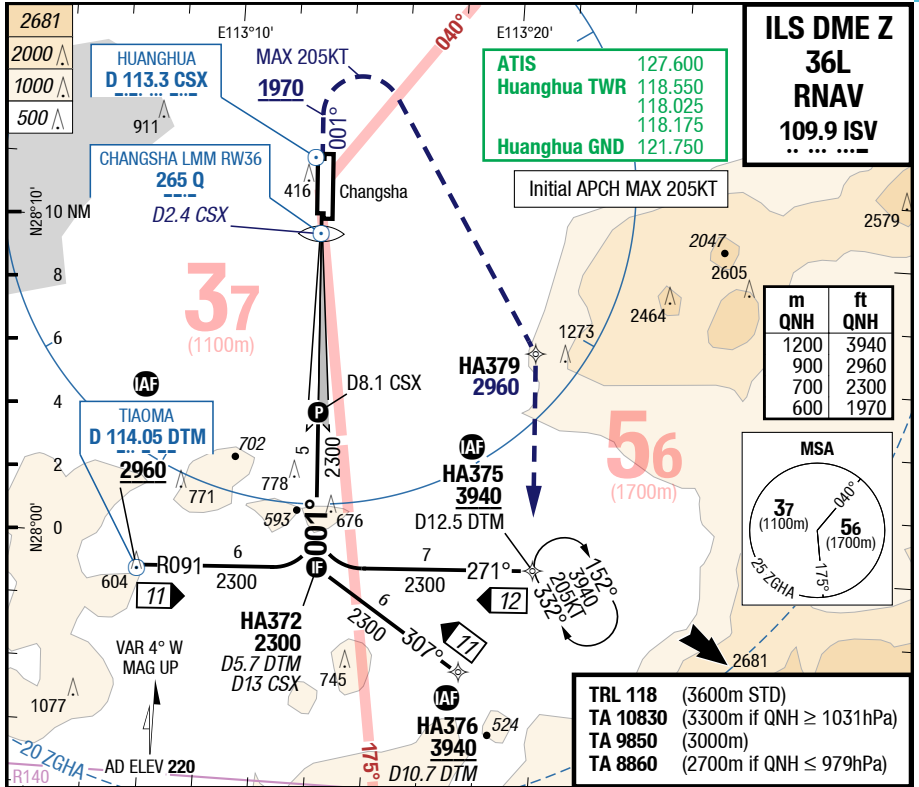
	18R	Cat 1 DME	LOC DME				Circling
C	ft - m/km ft	200 - 550R/800V 420	470 - 1.9V 690				740 - 3.2V 960
D	ft - m/km ft	220 - 550R/800V 440	470 - 1.9V 690				1100 - 5.0V 1320

Changes: FREQ

CSX-ZGHA

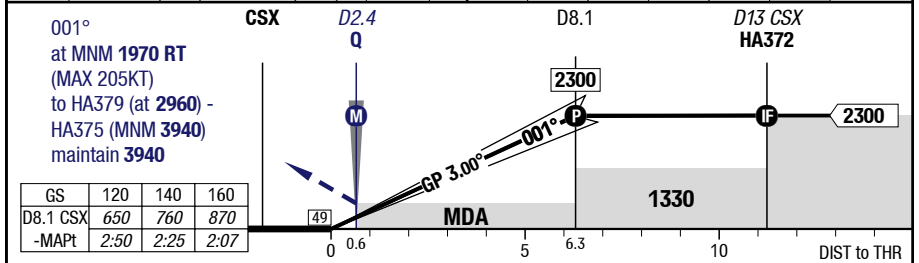
7-30

ILS DME Z 36L RNAV



60 HL	3.0°	45 x 3200	36L	4	5	6	7	8.1	LOC 3.07°
30 HL				980	1300	1630	1960	2300	D CSX

+0.2% TDZ --- (---%) / **THR 198 (7hPa)** HL-P1F



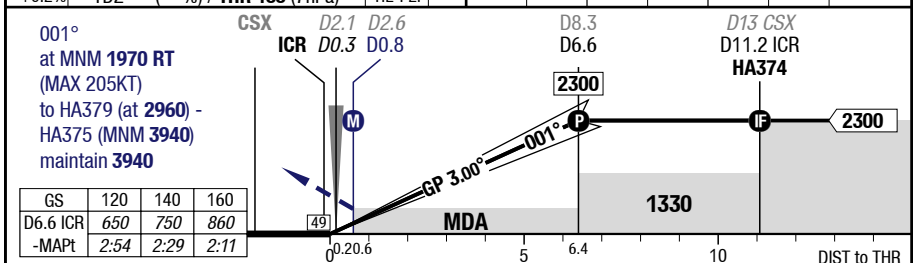
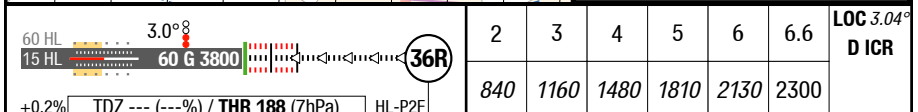
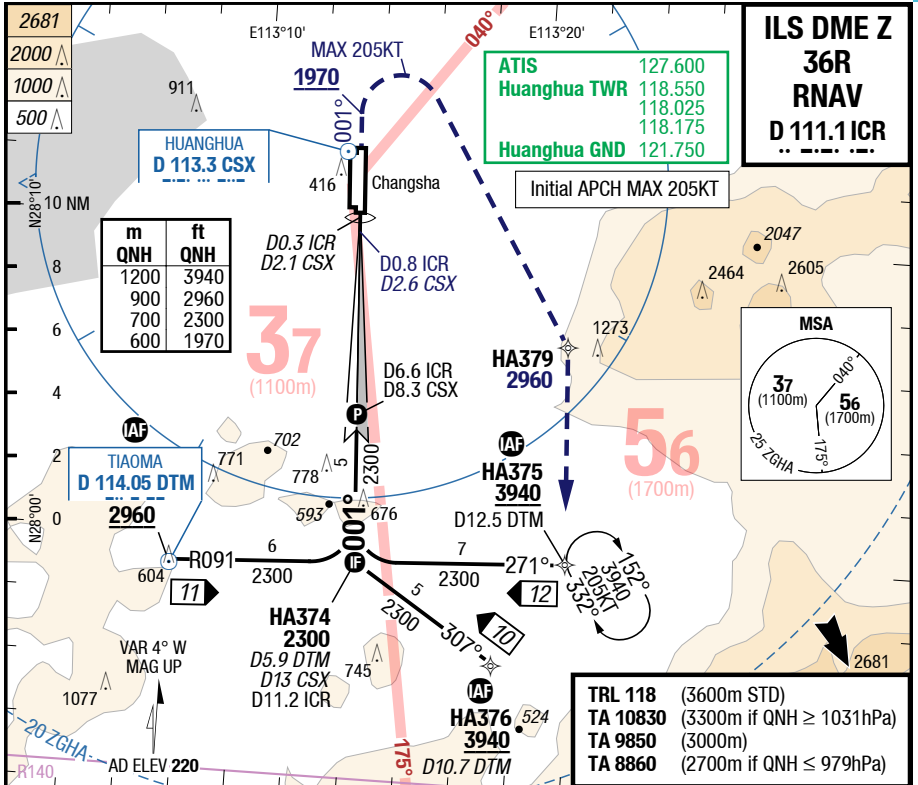
C	36L	Cat 1	LOC DME CSX	Circling
	ft - m/km ft	200 - 550R/800V 400	500 - 2.0V 690	
D	ft - m/km ft	200 - 550R/800V 400	500 - 2.0V 690	1100 - 5.0V 1320

Changes: FREQ

CSX-ZGHA

7-40

ILS DME Z 36R RNAV



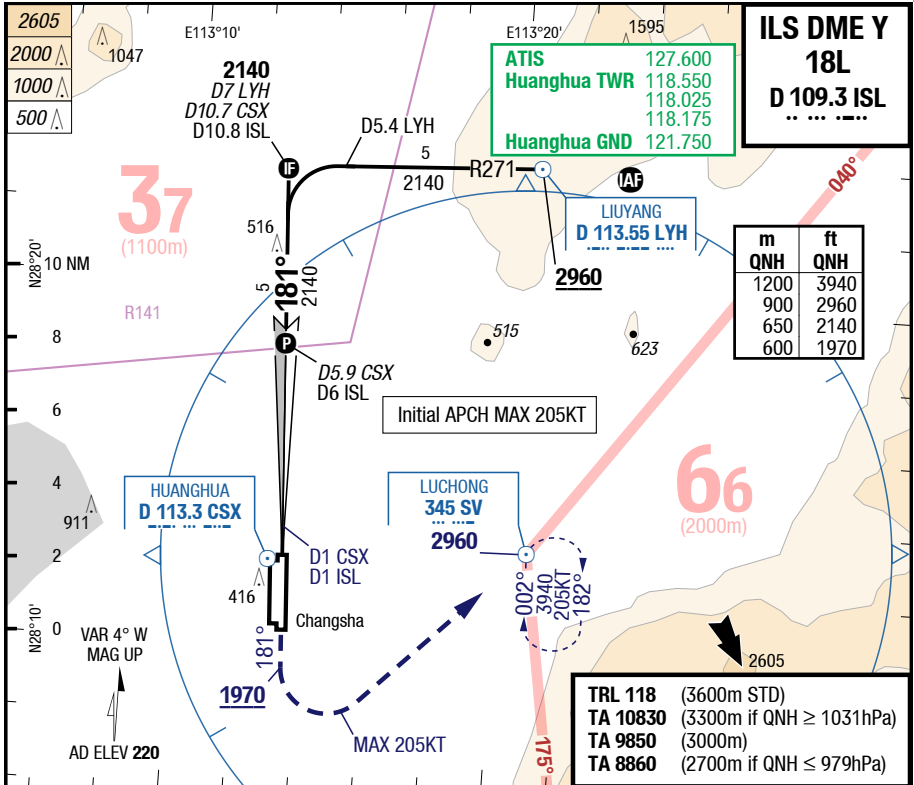
	36R	Cat 1	LOC DME			Circling
C	ft - m/km ft	220 - 550R/800V 410	490 - 2.0V 680			740 - 3.2V 960
D	ft - m/km ft	240 - 550R/800V 420	490 - 2.0V 680			1100 - 5.0V 1320

15-JUN-2017

CSX-ZGHA

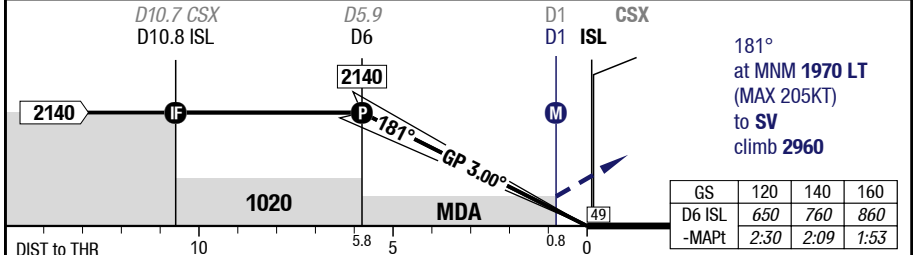
7-50

ILS DME Y 18L



LOC 3.05°	6	5	4	3	2	
D ISL	2140	1830	1510	1180	860	

HL-P1F THR 212 (8hPa) / TDZ --- (---%) -0.2%



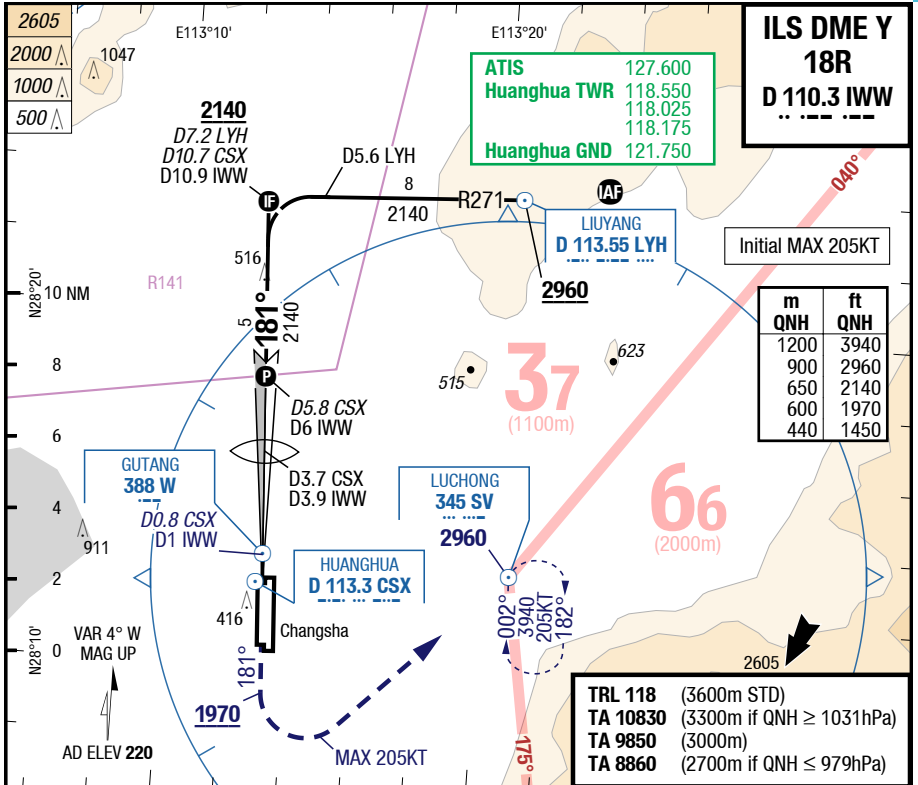
18L		Cat 1	LOC DME	Circling	
C	ft - m/km ft	200 - 550R/800V 420	510 - 2.1V 730	740 - 3.2V 960	
D	ft - m/km ft	200 - 550R/800V 420	510 - 2.1V 730	1100 - 5.0V 1320	

Changes: FREQ

CSX-ZGHA

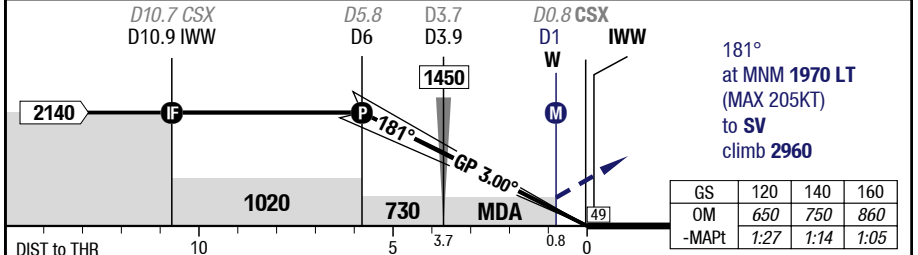
7-60

ILS DME Y 18R



LOC 3.04° D IWW	6	5	4	3	2
	2140	1830	1510	1180	860

HL-P1F THR 219 (8hPa) / TDZ --- (---%) -0.2%



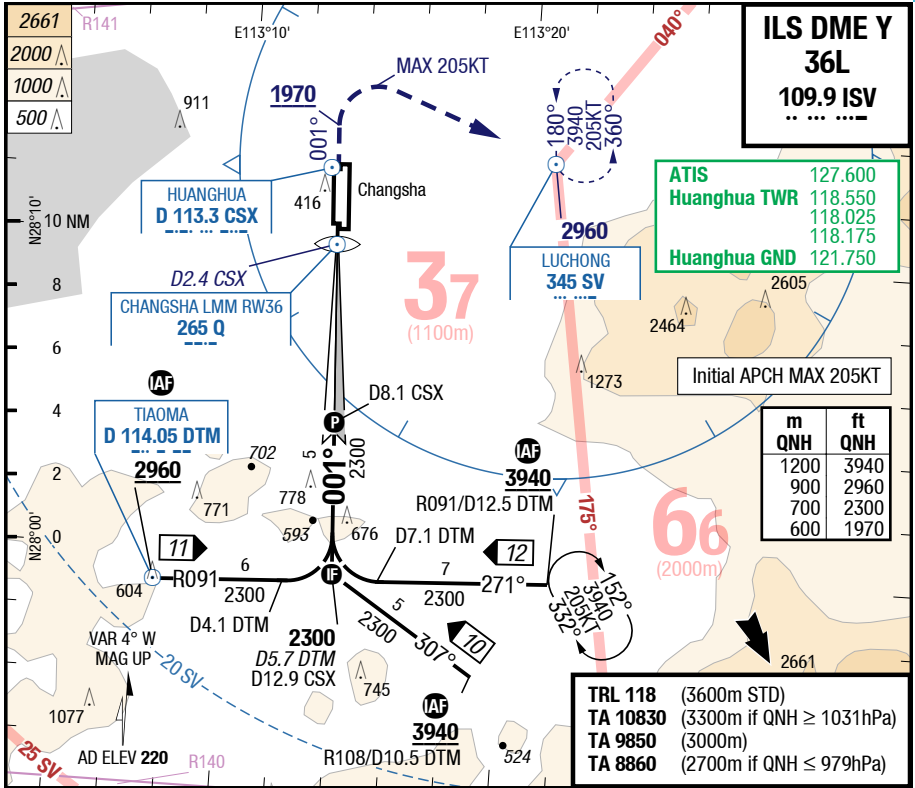
18R		Cat 1 DME	LOC DME	Circling	
C	ft - m/km ft	200 - 550R/800V 420	470 - 1.9V 690	740 - 3.2V 960	
D	ft - m/km ft	220 - 550R/800V 440	470 - 1.9V 690	1100 - 5.0V 1320	

Changes: FREQ

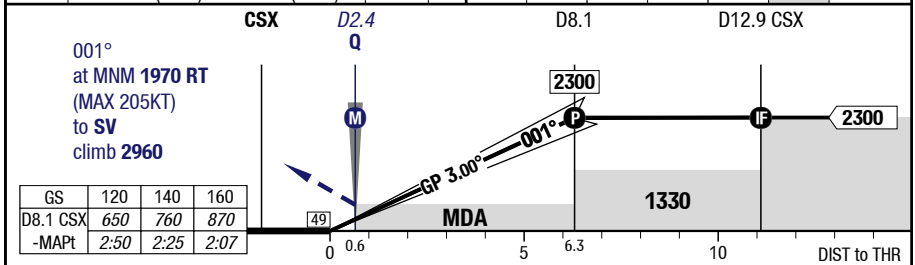
CSX-ZGHA

7-70

ILS DME Y 36L



60 HL	3.0°									LOC 3.07°
30 HL	45 x 3200									D CSX
+0.2% TDZ --- (---%) / THR 198 (7hPa) HL-P1F										



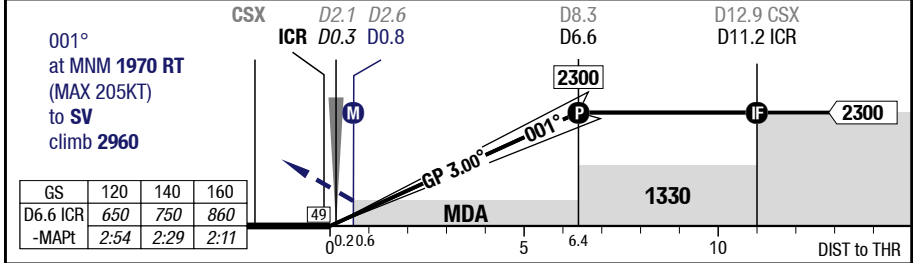
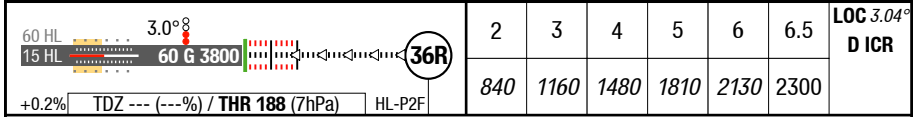
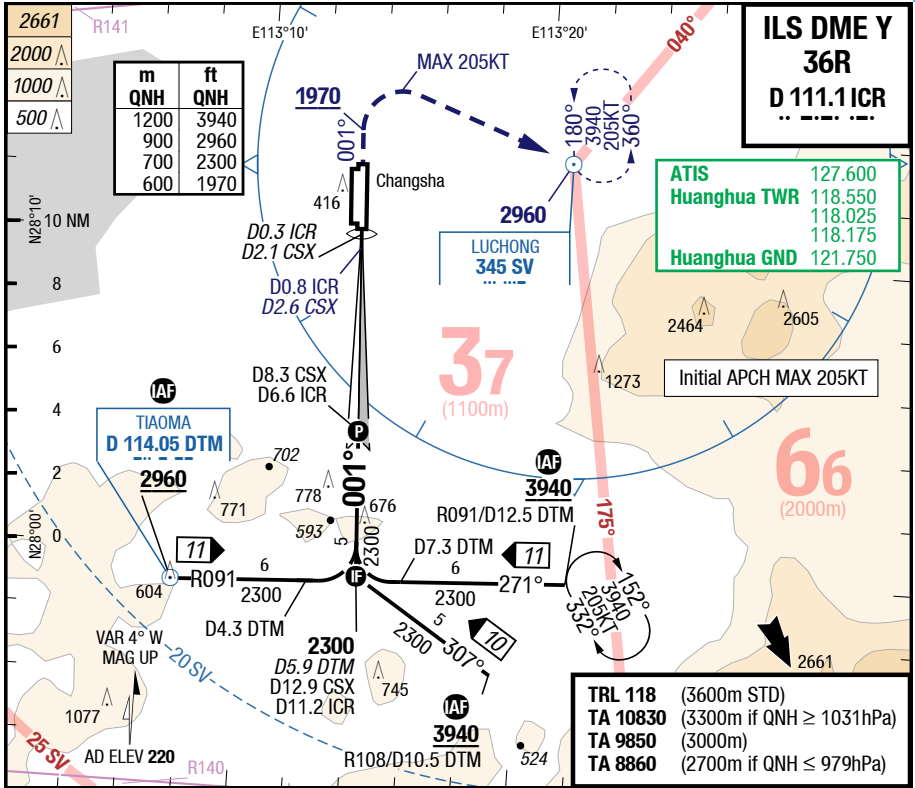
	36L	Cat 1	LOC DME CSX			Circling
C	ft - m/km ft	200 - 550R/800V 400	500 - 2.0V 690			740 - 3.2V 960
D	ft - m/km ft	200 - 550R/800V 400	500 - 2.0V 690			1100 - 5.0V 1320

15-JUN-2017

CSX-ZGHA

7-80

ILS DME Y 36R



C	36R		Cat 1	LOC DME			Circling
	ft - m/km		220 - 550R/800V	490 - 2.0V			
		410	680	960			
D	ft - m/km		240 - 550R/800V	490 - 2.0V			1100 - 5.0V
		420	680	1320			

Changes: FREQ

Effective 30-MAR-2017

23-MAR-2017

CSX-ZGHA

8-10

China Changsha Huanghua

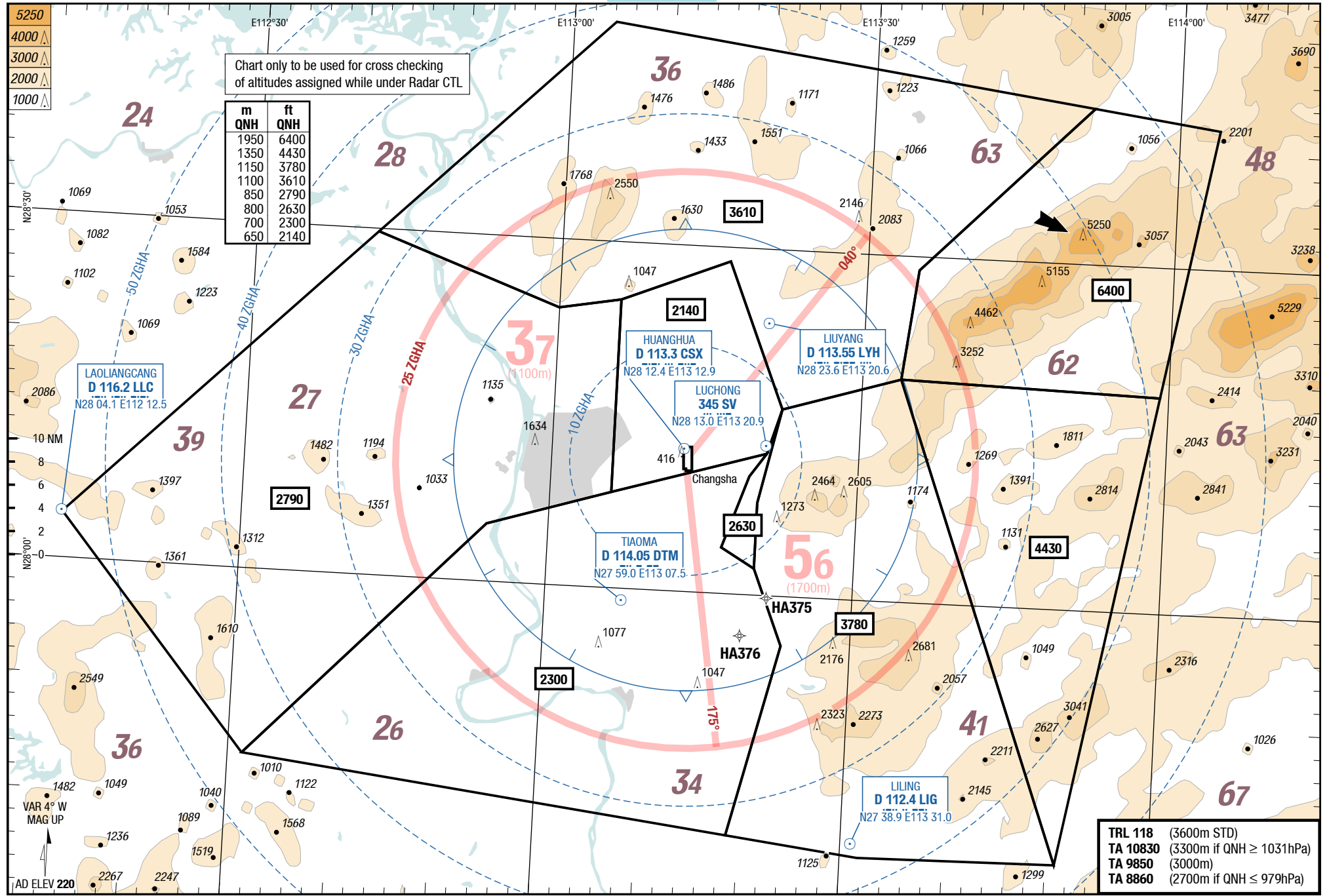
MRC

MRC

MRC

Huanghua Changsha China

MRC



Changes: Completely revised

LSY Standard (unitopww)

© Lido 2017